



ANNUAL REPORT 2012



# ANNUAL REPORT FOR THE YEAR ENDED 30 JUNE 2012

## Minister for Health Hon Kim Hames

In accordance with Section 63 of the Financial Management Act 2006, we hereby submit for your information and presentation to Parliament, the Annual Report of the Western Australian Health Promotion Foundation (Healthway) for the financial year ended 30 June 2012.

The Annual Report has been prepared in accordance with the provisions of the Financial Management Act 2006 and other legislative requirements.

The Western Australian Health Promotion Foundation is constituted under the authority of the Tobacco Products Control Act 2006.



**ASSOC. PROF ROSANNA CAPOLINGUA**  
Chairperson



**MR CATHCART WEATHERLY**  
Deputy Chairperson

Date: 27 July 2012

## Responsible Minister

Minister for Health  
Dr Kim Hames MB BS JP MLA

## Accountable Authority

Western Australian Health  
Promotion Foundation Board

## Board of Management Chairperson

July 2011 – June 2012  
Assoc. Prof Rosanna Capolingua

## Executive Director

Mr David Malone

## Office Location

24 Outram St  
West Perth  
PO Box 1284  
West Perth 6872

## CONTACT

### Phone

(08) 9476 7000

### Fax

(08) 9324 1145

### Country Callers

1800 198 450

### Email

healthway@healthway.wa.gov.au

### Website

Healthway: [www.healthway.wa.gov.au](http://www.healthway.wa.gov.au)  
WA Government: [wa.gov.au](http://wa.gov.au)

## Cover Photo:

Be Active Perth Wheelcats VS Brisbane Spinning Bullets  
Sunday 22 April 2012  
2012 National Wheelchair Basketball League  
Photographer: Emily Dimozantos

# CONTENTS

WHO ARE WE	5
CHAIRPERSON'S REPORT	6
EXECUTIVE DIRECTOR'S REPORT	8
SIGNIFICANT ISSUES IMPACTING THE AGENCY	10
BOARD MEMBERS	12
CORPORATE STRUCTURE	18
AGENCY PERFORMANCE	20
• Performance in High Priority Health Areas	20
- Reducing harm from tobacco	20
- Reducing harm from alcohol	21
- Preventing overweight and obesity	22
- Mental health promotion	23
• Reducing Inequalities	24
- Increasing the focus on promoting and improving health in population groups where health inequalities exist	24
- Improve knowledge and understanding to address the determinants and modifiers of health inequalities	25
- Build awareness and support for groups who are experiencing inequalities	25
• Building and Using the Evidence	26
- Focus on improving and increasing the translation of research findings into effective and sustainable policy and practice in health promotion	26
- Continue to nurture quality research and evaluation in WA	26
• Sustainable Change	27
- Recognise and support the variety of ways sustainable change can be achieved across programs	27
• Investing in the Future – Building Health Promotion Capacity	28
- Contribute to the development of an effective health promotion workforce in WA	28
- Contribute to the development of health promotion skills in sectors outside health	28
- Develop and nurture the expertise of individuals and groups working within health promotion to ensure that high quality, innovative and effective health work continues in WA	29
DISCLOSURES AND LEGAL COMPLIANCE	30
• Governance disclosures	30
• Other disclosures	30
• Other legal compliance	33
OPINION OF AUDITOR GENERAL	35
FINANCIAL STATEMENTS	38
KEY PERFORMANCE INDICATORS	70
FUNDING TABLE	76

# ABOUT HEALTHWAY

## WHO WE ARE

Healthway seeks to promote and support healthy lifestyles to reduce the burden of preventable disease in Western Australia.

Healthway (the Western Australian Health Promotion Foundation) was established in 1991 under Section 15 of the Tobacco Control Act 1990 as an independent statutory body reporting to the Minister for Health. Healthway now functions under Part 5 of the Tobacco Products Control Act 2006.

Healthway provides sponsorship to sports, arts, and racing organisations to promote healthy messages, facilitate healthy environments and increase participation in healthy activities. Healthway also provides grants to a diverse array of organisations to encourage healthy lifestyles and advance health promotion programs.

The key priorities for Healthway are reducing harm from tobacco, reducing harm from alcohol, reducing obesity and promoting good mental health.

# CHAIRPERSON'S REPORT

Healthway's annual report for 2011/2012 not only reflects on the progress made during the year in so many key areas but also on the challenges we faced together with our stakeholders in charting Healthway's course for the next five years and beyond.

The development of Healthway's Strategic Plan 2012 – 2017 was a major exercise during the year in which over 60 stakeholder organisations had input through an independent consultation process.

The process of developing the Plan was as exciting and informative as is the result. While stakeholders, including Healthway Board members, were engaged in the consultation process through an independent consultant, The Health Promotion Evaluation Unit at The University of Western Australia undertook a major review of Healthway's health priorities.

Several major themes emerged through the consultation process and these are reflected in the Plan.

Firstly, the unique role Healthway plays as a force for change in the community through advocacy and strategic partnerships has been endorsed and emphasised for the years ahead. As a result, Healthway's plan for the next five years is to continue to engage the community and to challenge conventional thought as we look for new ways of advancing the health promotion agenda in WA.

Next, our stakeholders identified the need for Healthway to continue to focus on obtaining strong health promotion returns on the funds we invest in sponsorships and grants. It is through this process of ensuring that health promotion remains the key focus of where its funds are invested that Healthway can continue to bring about change and encouragement for West Australians to make positive health choices.

Effective governance and Healthway's capacity as an organisation to deliver efficiency and high performance were also identified as important areas to our stakeholders along with charting a clear direction with transparent decision making. In line with this, the new Plan provides for ongoing reviews of priorities and performance to ensure alignment between the two.

I am pleased to report that, as the year drew to a close, the Strategic Plan 2012 – 2017 had been approved by the Board and will be publicly available early in the coming year.

During the year, a major national health promotion development saw the establishment of the Australian National Preventive Health Agency (ANPHA) and I am delighted to be able to say that Healthway has played a role in the creation of one of its key strategies – the new national Community Sponsorship Fund (CSF).

The Fund is being administered by ANPHA and to date this has been the catalyst for 12 national sporting organisations and their state associations to agree to work with the Federal Government to remove alcohol sponsorship from their sports.

Healthway has worked closely and collaboratively with ANPHA prior to the announcement of the CSF. In particular, Healthway provided support with the strategic development of the sponsorship program and the provision of technical assistance with respect to health promotion sponsorships and management of those sponsorships.

As the rollout of the new Community Sponsorship Fund commenced, it became clear that Healthway has led the way nationally in removing unhealthy sponsors from sport and in achieving that by working through mutually effective and satisfying partnerships with state sporting bodies.

As ANPHA conducted negotiations with national sporting organisations on minimum preventing health policy requirements, they were in turn, liaising with their state counterpart organisations. In each case, the national sports reported that their WA state counterparts were already meeting these objectives and were able to speak of their positive experience in working with Healthway as a sponsor.

So Healthway has been a key player in providing technical support to the CSF and, through our ongoing work in delivering health promotion returns through our partnerships with sport in WA, Healthway has led the way nationally and smoothed the way for sport in this State to access the national funds. It's a "win win" for health promotion and sport.

Healthway aims for high levels of accountability and has been recognised for this in the past. However, accountability is not something that we take for granted as we continue to strive for even higher levels of organisational performance and transparency.

It is therefore very pleasing to report that Healthway was acknowledged in November 2011 by the Auditor General as a "Better Practice Agency for 2010 – 11." This marks the third consecutive year that

Healthway has received this recognition and underscores our commitment to the highest standards of accountability.

The year ahead is set to be an exciting one. This year we saw the launch of the State Government's major new effort to tackle obesity in our community – the Live Lighter campaign run by the Heart Foundation and the Cancer Council WA. The new Live Lighter campaign advertisements linking visible, external fat to internal, organ strangling fat are ground-breaking and thought provoking. Healthway is set to launch our first new sponsorships promoting the Live Lighter message very soon in the coming year.

Finally, I would like to draw attention to the continued valuable contribution to Healthway of my fellow Board members and in particular I would like to acknowledge the support of the Deputy Chair Cathcart Weatherly. Thank you also to the many experts who give their valuable time to serve on Healthway's advisory committees and to the Healthway staff, led by David Malone, who work with the Board and advisory committees to achieve our mission of protecting and promoting the health of all West Australians. Together, we are making a positive difference to the health of our community.



**Associate Professor Rosanna Capolingua**  
**Chair of the Healthway Board**

# EXECUTIVE DIRECTOR'S REPORT

Healthway's mission is to empower individuals to make healthier choices and facilitate healthier environments in Western Australia. Once again, Healthway pursued this mission with a strong focus over the previous year.

2011/12 was a remarkable year for health promotion in Australia. The new Australian National Preventive Health Agency (ANPHA) was established; a groundbreaking national Community Sponsorship Fund to replace alcohol sponsorship in sport was launched and embraced by 12 sporting codes (including some of the highest participation sports in Australia); and the introduction of legislation requiring cigarettes to be sold in plain packaging without branding positioned Australia at the forefront of the worldwide fight against smoking. All of which was in addition to the roll-out of the National Partnership Agreement on Preventive Health between the Commonwealth and all States and Territories which provides \$872 million nationally over a six-year period for chronic disease prevention. The national appetite for prevention is strong and health promotion is recognised as a 'blue chip' investment.

By maintaining a lean corporate overhead of approximately 15% of total budget, Healthway continued to maintain a highly cost-effective operating model in order to maximise the funds available for health promotion programs during 2011/12. A number of corporate developments were progressed during the past year to further develop Healthway's efficiency of operations into the years ahead. An electronic application form was introduced for some categories of sponsorship following a successful pilot and a survey of end users found applicants expressed a high level of satisfaction with this new on-line product. A comprehensive TRIM electronic records system was also introduced to complement electronic applications.

Over the past year the Healthway grants program continued to support a range of innovative projects and activities aimed at encouraging healthy behaviours. These included locally based initiatives such as funding for schools through the Health Promoting Schools and the Smart Schools grants, through to major multi-year health promotion campaigns such as Smarter than Smoking and the extremely successful Mentally Healthy WA campaign promoting the Act, Belong, Commit message.

Act, Belong, Commit was the first community-based program in the world to focus on preventing mental health problems and was developed from the results of scoping research initiated by Healthway ten years ago. The campaign now has more than forty local sites and community partners across WA, including partnerships with organisations such as FoodBank WA, Fortescue Metals Group and the Department of Transport. In 2011 the campaign aired new television adverts focusing on personal testimonials and a recent survey of 600 community members showed that more than half of metropolitan adults and three-quarters of regional residents were aware of the campaign. Of the people who were aware of the campaign, 22% reported it had changed their thinking about mental health issues and 12% reported changing their behaviour by being more active or joining a group to improve their mental health. The campaign has demonstrated such success that it is now being adopted in other Australian states and international jurisdictions.

During 2011/12 Healthway continued its substantial investment in sport and arts sponsorship. The primary focus of the Healthway sponsorship program is to extend the reach and effectiveness of health message campaigns such as Alcohol Think Again, Smarter than Smoking, Live Lighter and Act Belong Commit. All together, Healthway invested nearly \$12 million in sponsorship of WA-based activities and events in order to leverage some eleven different health promotion campaigns. The intellectual property of these campaigns is owned and managed by a range of different agencies and Healthway greatly appreciates the support of these partner organisations.

Independent evaluation of Healthway sponsorships is regularly undertaken to measure audience awareness of health messages, understanding of these messages, intentions and subsequent behavior change. In 2011/12 the Sponsorship Monitor, undertaken by our evaluation partners at the University of Western Australia, showed that 76% of people attending Healthway-sponsored events were aware of the health message being promoted at the event and nearly 15% reported changing their behaviour as a result of previous exposure to the message - an exceptionally high percentage and outcome when benchmarked against typical



corporate sponsorship metrics. Put simply, most private sector sponsors would be ecstatic with these outcomes.

The challenge is to maintain these impressive results in the face of increasing clutter, competition and sophisticated marketing in the sponsorship space. To this end, Healthway undertook some significant steps in 2011/12 to develop our approach to sponsorship activation of health campaign messages. New and innovative approaches to sponsorship leveraging were developed and implemented in collaboration with sponsored organisations and the campaign teams in health agencies. Through cautious due diligence and contract management, Healthway was able to minimise the extent to which competing messages (such as promotions for alcohol or junk food) detracted from the effectiveness of health promotion sponsorship. None of this would be possible without the goodwill and partnership of several hundred organisations that agreed to sponsorship terms with Healthway during 2011/12.

The foundation of Healthway's work is the published evidence-base for health promotion and the guidance provided by significant expert reviews, such as the recommendations of Australia's National Preventative Health Taskforce. Over the past year Healthway continued to support the development of the health promotion evidence-base by supporting high quality research to address knowledge gaps. In 2011/12 Healthway invested approximately \$2.5 million in research grants, scholarships and fellowships, to foster quality research and help build the capacity of the health promotion sector.

Supporting health promotion research with a strong relevance to practice and policy is an important feature of Healthway's work. More than 600 scientific publications have been produced from Healthway funded research over the past 20 years, with more than 250 Masters and PhD students supported. It is particularly pleasing that Healthway's first Indigenous Research Scholarship holder to complete her thesis, Dr Marian Kickett from UWA, was awarded her PhD degree in 2011/12. Dr Kickett explored the concept of resiliency among Aboriginal people and her research has contributed to understanding of the factors associated with coping with past trauma and living between two cultures.

In closing I would like to acknowledge the expertise, commitment and enthusiasm of Healthway's dedicated staff team. I would also like to acknowledge the invaluable leadership provided by the Chair of Healthway's Board, Associate Professor Rosanna Capolingua; and the contribution of all Healthway Board and Advisory Committee members.



**David Malone**  
**EXECUTIVE DIRECTOR**

# SIGNIFICANT ISSUES IMPACTING THE AGENCY

**Healthway operates in a rapidly changing and complex environment.**

**The following issues in the 2011/12 year will have an impact on the ongoing work of Healthway.**

## **NATIONAL COMMUNITY SPONSORSHIP FUND**

A new Community Sponsorship Fund (CSF) was developed and launched as part of the Australian Government's National Binge Drinking Strategy (NBDS). Responsibility for the CSF rests with the Australian National Preventive Health Agency (ANPHA).

The Australian Government has allocated \$25 million to the CSF to provide an alternative to alcohol sponsorship for community and cultural organisations. The primary objective of the CSF is to reduce the exposure of young people and children to alcohol imagery and branding through sponsorship arrangements. The national bodies (together with their state associations) of many of the highest participation sports in Australia have signed up to the CSF; including the Football Federation of Australia, Netball Australia, Basketball Australia, Swimming Australia, Cycling Australia, and Hockey Australia. As a key element of the NBDS, these sports are now working with ANPHA to promote the National Government's new anti-binge drinking message, Be the Influence: Tackle Binge Drinking.

Importantly, the design and implementation of the CSF was developed in close consultation with Healthway, in order to limit the potential for the new national sponsorship scheme to adversely impact on existing models of health promotion sponsorship in Western Australia. The CSF initiative closely aligns with and complements the objective of the Healthway Sponsorship Program to reduce unhealthy promotions through sponsorship arrangements, and both programs share a common approach to defining alcohol promotions and conditions of sponsorship. Healthway recognises the challenges of integrating a new national binge-drinking message alongside the WA State Government's Alcohol Think Again campaign (which is promoted through Healthway sponsorship arrangements) and will continue to liaise closely with ANPHA in this respect.

## **GROWING COMMUNITY CONCERN REGARDING ALCOHOL AND JUNK FOOD PROMOTION**

Community surveys indicate that many Australians are becoming increasingly concerned about the extent of alcohol and junk food promotion, especially through sponsorship of events and activities with high exposure to young participants or spectators. A survey of more than 2,000 Western Australians, undertaken by the Health Promotion Evaluation Unit at the University of Western Australia, found three-quarters of respondents did not want children offered fast food vouchers when they participated in junior sport. Over half those surveyed did not want promotion of fast food in association with any events children attended.

Furthermore, a recent survey by the Cancer Council NSW in collaboration with the Prevention Research Collaboration found that 86% of parents thought elite sport sponsorship influenced the products their children asked for and bought.

Healthway acknowledges these concerns and continues to support this community sentiment. Healthway advocates for reductions in alcohol and junk food promotion and uses its investments in sport and arts activities to create healthy environments for participation, free of alcohol and fast food promotion.

## **WA HEALTH PROMOTION STRATEGIC FRAMEWORK 2012-2016**

During the previous year, WA Health embarked on a process to review the strategic directions and priorities for the prevention of chronic disease and injury in WA over the next five years. Led by the Chronic Disease Prevention Directorate, the Health Promotion Strategic Framework 2012-2016 was reviewed in consultation with a wide range of government and non-government organisations, including Healthway. The goal of the Health Promotion Strategic Framework is to lower the incidence of avoidable chronic disease and injury in WA by facilitating improvements in health behaviours and environments.

The WA Government is a signatory to the National Partnership Agreement on Preventive Health (NPAPH), which sets targets which will help prevent the lifestyle risks that cause chronic disease, especially obesity, tobacco use and harmful drinking. The Health Promotion Strategic Framework 2012-2016 outlines the broad policy priorities which WA Health intends to pursue in fulfilment of its obligations under the NPAPH, and through state-funded initiatives to address chronic disease and injury prevention in WA.

Healthway recognises that a comprehensive approach remains vital to lower the incidence of avoidable chronic disease in WA by facilitating improvements in health behaviours and environments. Healthway participated in the consultation process and will continue to ensure Healthway's strategic directions continue to complement the WA Health Promotion Strategic Framework.

# BOARD MEMBERS

Membership of the Board of Healthway is set out under section 61 of the Tobacco Products Control Act 2006.

Under the Act, the Board consists of 11 members of whom one is to be the chairperson appointed by the Minister for Health on the nomination of the Premier.

Of the other 10 members of the Board, six are appointed by the Minister for Health on the nomination of stakeholder groups, as set out in the Act, and four are the nominees of the Chief Executive Officers of their State Government agencies, as also set out in the Act.

Board members are appointed for three year terms and cannot serve more than two consecutive terms on the Board.

**On 30 June 2012, the members of the Board were:**



## **ASSOCIATE PROFESSOR ROSANNA CAPOLINGUA** Chairperson

Associate Professor Capolingua joined the Board of Healthway as the nominee of the Australian Medical Association (WA) in 2000 and was appointed Chairperson in 2009.

Dr Capolingua has played an active leadership role within the medical profession and she has a keen interest and extensive experience in community health and effective governance of public and private organisations.

She has been a general practitioner in Perth for more than 20 years and is principal of her own successful medical practice. She served two terms as State AMA President and two terms as AMA National President where she chaired the AMA Ethics and Medico Legal Committee and the Taskforce on Indigenous Health.

She is a member of the Council and Board of the Medical Defence Association, the Board of St John of God Healthcare, the University of WA's Raine Foundation, Health Training Australia and the Board of Governors of the University of Notre Dame.

Dr Capolingua is a former member of two National Health and Medical Research Council advisory bodies, has served on the Medical Board of WA, has chaired the Australian Publishing Company and is a former Board member of MercyCare.

As Medical Director of the AMA (WA) Youth Foundation, Dr Capolingua is the driving force behind the DrYes and Youth Friendly Doctor programs which have helped more than 90,000 high school children deal with issues such as sexual health, mental health, drugs and alcohol.



## **CATHCART WEATHERLY** Deputy Chairperson

Mr Weatherly was appointed to the Board as the nominee of the WA Arts Federation. He has a passionate interest in the arts, culture and social justice issues.

Originally from Tasmania, he moved to Western Australia in the 1990's and, in 1996, was appointed founding Executive Director of the Community Housing Coalition of WA – the peak representative body for non-government, not-for-profit housing providers. In that role he was a member of many state and national committees including a three year term as Chairperson of the Community Housing Federation of Australia and a Board member of the WA Council of Social Service (WACOSS).

In 2001, he served on the State Government's State Homelessness Task Force which inquired into and proposed an action plan for resolving the issue of homelessness in WA.

From July 2005 to December 2010, Mr Weatherly was the General Manager of the Spare Parts Puppet Theatre in Fremantle. Currently working in his own consultancy, he is a Board member of the Chamber of Arts and Culture Western Australia.





### **BRETT ASHDOWN**

Mr Ashdown was appointed to the Board as the nominee of the Western Australian Sports Federation (WASF) in August 2011.

For many years, Mr Ashdown has combined a keen interest and involvement in many sports with a successful business career in the chemical industry.

As a sportsman, he has been a state ranked squash player and has played golf extensively.

In sports administration, he was the inaugural Chairman of Cricketwest and is currently President of the Swan Helena Cricket Association and a Life Member of the Forrestfield Cricket Club. He was also President of the Belmont Squash Club. While he is interested in most sports, Mr Ashdown is a keen follower of Australian Rules Football, hockey, cycling, swimming and athletics.

Mr Ashdown has worked in the chemical industry for 25 years and is currently the manager for Western Australia and the Northern Territory for a large multi-national chemical distribution company.



### **GRAHAM BRIMAGE**

Mr Brimage was appointed to the Board as the nominee of the Department of Sport and Recreation (DSR) where he is Director Strategic Policy and Regional Services.

He has fulfilled a range of executive and management roles within DSR which have involved developing sport in key areas including the introduction of business planning to State sporting associations, local and regional services and facilities planning with local governments, camps management and strategic planning at agency, industry and sector levels. Mr Brimage was involved in the establishment of Healthway when he was seconded from DSR to develop the role of Sport Program Manager within Healthway.

Mr Brimage's interest in public policy development has led to increased cooperation between the sport sector and many other sectors including water, environment, justice, local government, Indigenous Affairs, communities, tourism, health and education. He chairs the Centre for Sport and Recreation Research at Curtin University which promotes multi-disciplinary enquiry on these diverse agendas and has also been the coordinator of Strategic Directions for the Western Australian Sport and Recreation Industry plans.

Mr Brimage's own sport interests include surfing, snowboarding and cycling. He is a volunteer in presenting the annual international surfing competition the Telstra Drug Aware Pro at Margaret River.



### **PROFESSOR MIKE DAUBE**

Professor Daube was appointed to the Board as the nominee of the Australian Council on Smoking and Health (ACOSH). He is the President of ACOSH.

Professor Daube is Professor of Health Policy at Curtin University and Director of the Public Health Advocacy Institute and the McCusker Centre for Action on Alcohol and Youth.

Before joining Curtin University in January 2005, Professor Daube was Director General of Health for Western Australia. He has played a leading role in health administration and public health in Australia and internationally since 1973. Since moving to WA in 1984 he has held many key roles in both government and non-government organisations in WA, nationally and internationally and has received many national and international awards for his contributions to public health.

## BOARD MEMBERS (CONTINUED)



### MARGARET DAWKINS

Ms Dawkins was appointed to the Board as the nominee of the Department for Communities which develops policy, delivers programs and funds community organisations on behalf of the state government in the areas of early years, children, youth and families.

Her role as Executive Director, Policy and Planning also encompasses policy and program development in the areas of women's interests, carers, seniors and volunteering. Ms Dawkins has many years' experience in strategic administration and planning and research roles in the public sector.

She is a current member of the State Government's Drug and Alcohol Senior Officers Group and the Crime Prevention Senior Officer's Group. Ms Dawkins has previously headed the Office for Youth, the Office for Seniors Interests and the State Government's Volunteering Secretariat. She originally trained as a psychologist and teacher and has worked as both a practitioner and in research and evaluation in the child abuse and broader social welfare areas.



### CLINICAL PROFESSOR GARY GEELHOED

Dr Geelhoed was appointed to the Board as the nominee of the Australian Medical Association (WA).

He is the Chair of the Drug and Alcohol Office and Chief Medical Officer for WA. He is a medical expert on child health, a paediatrician, and was Director of Princess Margaret Hospital for Children's Emergency Department for 22 years.

He is also involved in medical research on many areas of children's health and has contributed to medical textbooks including the Encyclopaedia of Respiratory Medicine and the Textbook of Paediatric Emergency Medicine.

Dr Geelhoed is a past State President of the AMA (WA) and is a member of the AMA's Federal Council.



### JOHN GIORGI JP

Mr Giorgi was appointed to the Board as the nominee of the WA Local Government Association (WALGA), in June 2011.

With almost 40 years of service in local government, he is currently Chief Executive Officer of the City of Vincent, a position he has held since August 1994 and, prior to that, he was a senior employee with the City of Perth.

Mr Giorgi's qualifications include a Bachelor of Science Degree in Environmental Health, diplomas in public health and health technology as well as post graduate public sector management qualifications. He is a Fellow of the Local Government Managers Association and a Fellow of the Australian Institute of Environmental Health.

In recognition of his experience and commitment to local government, Mr Giorgi was awarded a Certificate of Recognition by WALGA in 2010 and a Certificate of Acknowledgement by the Local Government Managers Association in 2007.

For personal recreation, Mr Giorgi enjoys being a soccer referee and following soccer at all levels. He is also an active Justice of the Peace.



### **COLIN WALKER**

Mr Walker was appointed to the Board as the nominee of the Department of Culture and the Arts. He is the Director of the Department's Cultural Development and Strategic Programs.

Mr Walker is a senior arts manager with extensive experience and networks in the private, not for profit arts and government sectors.

Prior to joining the Department in 2006, Mr Walker was Director, Arts & Business West Midlands in Birmingham in the UK and Head of International Development Arts & Business in London.

He has acted as an arts sponsorship consultant to a range of international brands and many of the most recognisable arts institutions in the UK.

In his current role with the Department of Culture and the Arts, Mr Walker is responsible for developing and implementing the Department's policies relating to Indigenous arts, young people and the arts, the collections sector, international, urban planning, public art, digital arts, research, arts in health and arts in education. He is Chair of the Urban Art sub-committee of the State Graffiti Taskforce.



### **ANDREW WATT**

Mr. Watt was appointed to the Board as the nominee of the Australian Council for Health, Physical Education and Recreation WA (ACHPER), an organisation for which he is the immediate past President.

He is a Senior Associate at Creating Communities Australia Pty Ltd where he directs the company's Research and Engagement team and their North West operations. His role involves leading a range of community and economic development projects which involve working with key stakeholders across government, non-government, business and resource sectors to plan and activate towns and cities.

Mr. Watt has previously held several positions with the Department of Education including School Principal, Manager District Operations, Project Manager of Local Area Planning, Deputy Principal and teacher. Mr. Watt was also involved in the development of curriculum materials in the Health and Physical Education Learning Area and held the position of Primary Project Leader for the Be Active School and Community Project, which was funded by Healthway.



### **PROFESSOR TARUN WEERAMANTHRI**

Dr Weeramanthri was appointed to the Board as the nominee of the WA Department of Health. After clinical training in WA, Dr Weeramanthri worked in the Northern Territory from 1991-2007, first in Aboriginal health research, and then as an outreach and specialist physician. He helped develop the NT Preventable Chronic Disease Strategy, and became NT Chief Health Officer in 2004. He returned to WA in 2008. He is Executive Director Public Health and Clinical Services in the WA Health Department and Chief Health Officer.

Dr Weeramanthri's interests are in the contribution public health can make to Aboriginal health improvement, spatial health research, use of new social networking technologies in public health and the implementation of health policy.

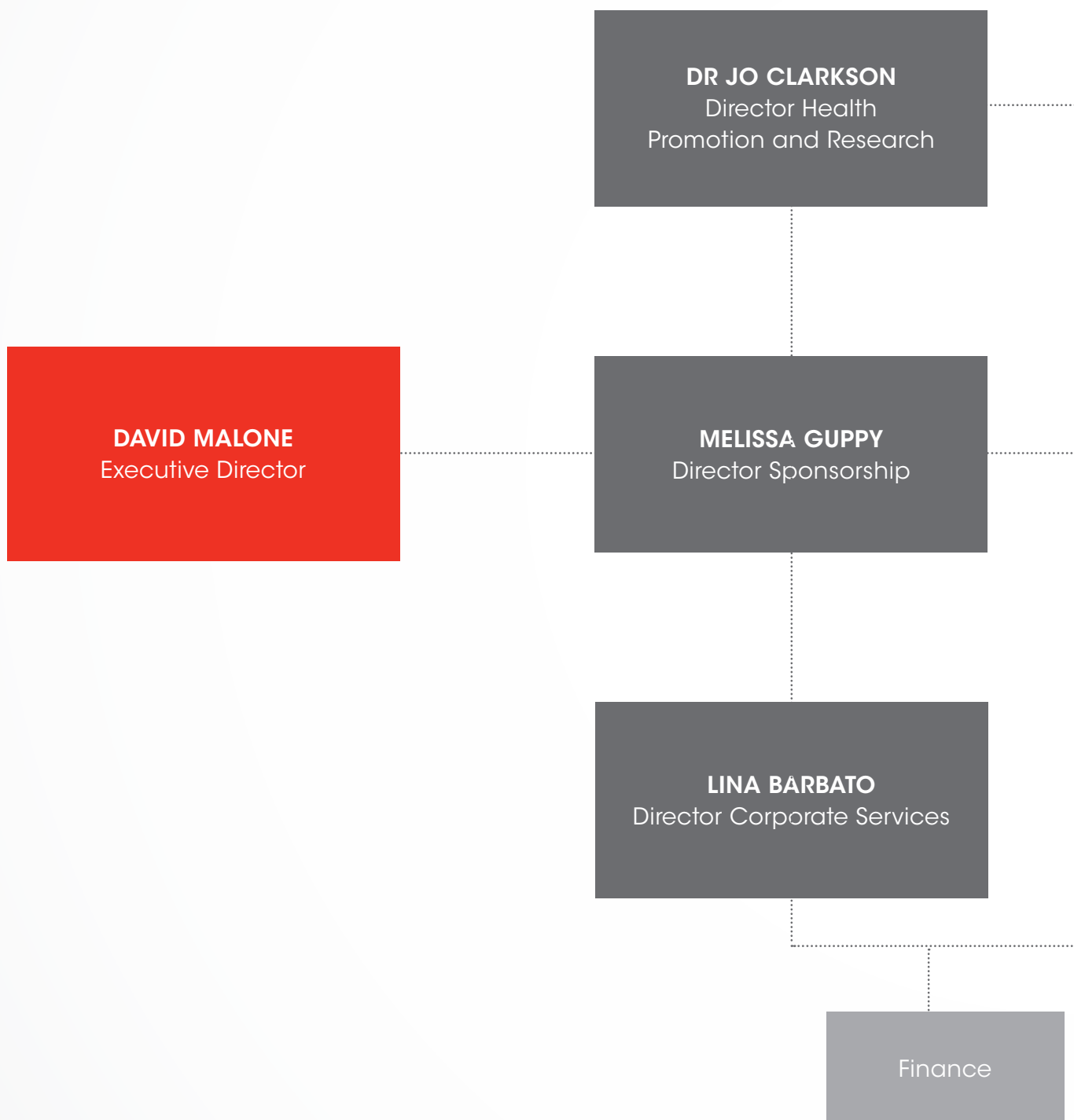
# MEETINGS ATTENDED

Attendance at Healthway Board Meetings 2011/12 - by Board Member or Deputy			
	No. of scheduled meetings 2011/12	Actual Meetings Member	Attended Deputy
Assoc Prof Rosanna Capolingua	6	6	0
Mr Cathcart Weatherly	6	6	0
Mr Brett Ashdown	6	5	1
Mr Graham Brimage	3	3	0
Prof Mike Daube	6	6	0
Ms Margaret Dawkins	6	6	0
Prof Gary Geelhoed	6	4	1
Mr John Giorgi	6	5	0
Mr Colin Walker	6	3	0
Mr Andrew Watt	6	5	0
Prof Tarun Weeramanthri	6	5	1
Ms Jennifer Riatti	3	1	2





# HEALTHWAY CORPORATE STRUCTURE



Health Promotion  
Projects

Health Promotion  
Research

Co-sponsorship  
Risk Assessment

Sponsorship  
Programs

Sponsorship  
Leveraging

Organisational  
Development

Information  
Management  
and Technology

Governance

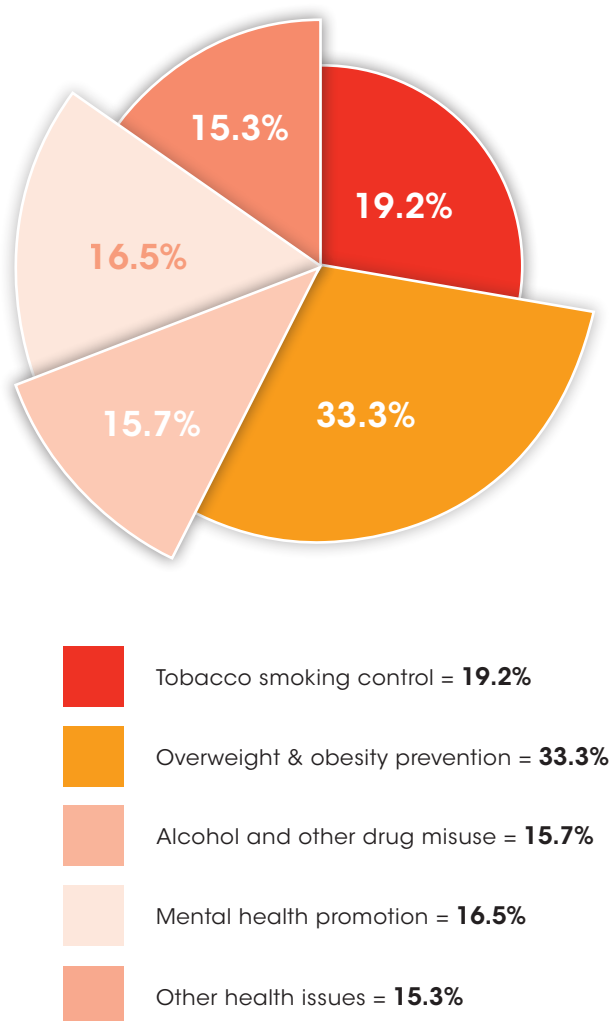
Contract  
Management

# AGENCY PERFORMANCE

## PERFORMANCE IN HIGH PRIORITY HEALTH AREAS

The highest priority health issues in Healthway's 2008-2011 Strategic Plan are reducing harm from tobacco and alcohol, preventing overweight and obesity, and promoting mental health and wellbeing. In 2011/12, more than 84% of Healthway funding across all program areas was allocated to these high priority health issues.

### Percentage of Healthway funding in 2011/12 allocated to high priority health issues (across all program areas)



## Reducing harm from tobacco

Tobacco control remains an important high priority for Healthway to ensure that the prevalence of smoking continues to fall in Western Australia. Smoking-related diseases still kill around 1,200 West Australians annually, and among some groups in the community the prevalence of smoking is considerably higher than the 12% average among adults in the State.

In 2011/12 Healthway allocated 19% of its total budget for grants and sponsorships to tobacco control activities, higher than the previous year. In addition, changes to the sponsorship program in 2010/11 introduced the new requirement for all outdoor and indoor areas under the control of sponsored organisations to be smoke free from 1 July 2010. This change reflects Healthway's strong commitment to lead the way in tobacco control, beyond legislative requirements, to ensure that people attending and participating in Healthway-sponsored activities enjoy the maximum possible protection from tobacco smoke.

Sixteen per cent of the sponsorship program budget was allocated to the prevention of harm from tobacco. There were three messages used; Quit, Smarter than Smoking and Smokefree WA. These messages were assigned to suitable programs to maximise engagement focusing on Healthway priority populations and appropriate target audiences.

There was a vast range of annual programs and events in the sport sponsorship area to promote the health messages. This included state sporting associations such as netball, hockey and soccer integrating promotional strategies within their annual development programs. Events such as the Western Desert Sports Carnival held in the East Pilbara and the Langley Park Fly In were also important vehicles to promote a tobacco health message to communities within WA.

In 2011/2012 Healthway maintained a strong focus on promoting smoking related messages through the racing sponsorship area. The partnership with rally racing grew to include a third key event; Targa South West held in various towns south of Perth, promoting the Quit message. Continued sponsorship of Speedway to target populations including Collie, Bunbury and Esperance saw increased promotion of the Smokefree WA and Smarter than Smoking messages in regional areas of WA.



Healthway continued sponsorship of key arts organisations during the last year with a focus on education programs targeting young people in WA. The Western Australian Music Industry Association's, Smarter Than Smoking Schools Alive program was instrumental in engaging young people in a tobacco health message. The sponsorship of Country Arts WA saw the promotion of the Smokefree WA message being delivered to remote Aboriginal communities and other regions across the state via the Shows on the Go production and tour. Partnerships involving regional tours provide an avenue for the promotion of a health message in areas where opportunities to do so on a regular basis are limited.

Healthway allocated 45% of its total funding for health promotion projects in 2011/12 to tobacco control projects, a higher percentage than previous years. Significant funding was allocated to continue support for three major tobacco control initiatives, the Cancer Council of WA's (TCCWA) Make Smoking History project, which is co-funded with TCCWA and the WA Department of Health, the Australian Council on Smoking and Health (ACOSH) and the Heart Foundation's highly successful youth-focused "Smarter than Smoking" project.

### **Reducing harm from alcohol**

The amount of alcohol consumed per capita in Australia has slowly increased over the past two decades and alcohol-related harm has been estimated to cost the community more than \$15 billion annually nationwide. Up to 70% of all police responses are alcohol related and rates of alcohol related harm in young people aged 16-24 years have increased significantly over recent years. Healthway has increased its focus on preventing harm from alcohol in 2011/12 and allocated more than 15% of its total budget to grants and sponsorships addressing alcohol and other drugs misuse, higher than in previous years. In addition, the co-sponsorship policy has significantly reduced alcohol promotions including signage and other promotional activity associated with Healthway sponsored events and activities.

Fourteen per cent of the sponsorship program budget was allocated to the prevention of harm from alcohol. The health promotion messages used were Alcohol Think Again, Drug Aware and Respect Yourself Respect Your Culture. These messages were promoted across a number of programs and events

in the sport and racing arena throughout various regions of WA.

Healthway partnered with a number of Western Australian teams participating in national league competitions as a key strategy for raising awareness of the Alcohol Think Again message. This included teams in basketball, netball, and baseball. Partnering organisations such as the Perth Wildcats, West Coast Waves, West Coast Fever and Perth Heat provided an opportunity for the Alcohol Think Again brand to be promoted to a wider audience and leverage from the positive brand values of such high profile local teams. A longstanding partnership with Surfing WA saw the Drug Aware message receive joint naming rights to one of the states highest profile sporting events, the Telstra Drug Aware Pro held in Margaret River. The participation of the world's top ranked male and female surfers saw the event receive record interest and media exposure leading to impressive promotional benefits and engagement opportunities for the Drug Aware health message.

The Drug aware message was promoted across a number of art sponsorships during the year. Partnerships with organisations like the Mandurah Performing Arts Centre and the Mundaring Arts Centre provided an opportunity for the Drug Aware message to be promoted to the outer metropolitan area of Perth. A number of festivals in metropolitan and regional areas of WA were also allocated the Drug Aware message, including the Exposure 2012 Youth Music Festival presented by the Town of Cambridge. The music festival was held at City Beach and utilised artists to attract a youth audience making the event a perfect partner for the Drug Aware message.

The Respect Yourself Respect Your Culture message was aligned to a number of sponsorships targeting aboriginal communities throughout WA. Sponsorship agreements with organisations such as Yirra Yaakin and Madjilil Moorna saw the health message promoted and embraced by a number of communities in areas including the Goldfields, Karroatha and Halls Creek.

A significant health promotion project grant was awarded in 2011/12 to the Drug and Alcohol Office working in collaboration with the McCusker Centre for Action on Alcohol and Youth, to develop a major new community campaign focusing on preventing harms associated with alcohol, targeting parents and teenagers. Healthway has also continued its

# AGENCY PERFORMANCE (CONTINUED)

partnership with the Drug and Alcohol Office (DAO) and the WA Department of Health this year to offer Community Alcohol Grants for health promotion and prevention initiatives to reduce harm from alcohol at the community level. Since its introduction in 2010, the program has supported more than 25 projects across WA including in the Southwest, the Pilbara, the Midwest and the Great Southern regions to develop locally appropriate approaches to reducing alcohol harm.

Two major research grants awarded in 2011/12 will focus on reducing harms from alcohol. Professor Bruce Maycock of Curtin University was awarded a two-year research grant to study how social networks among young people influence their beliefs and behaviour around alcohol consumption, in order to identify new opportunities for prevention. A research grant awarded to Professor Simone Pettigrew in the University of WA in 2011/12 will focus on identifying and testing alcohol warning statements linked to cancer-related risks, to inform the development of future public education aimed at reducing harms from alcohol. Healthway also collaborated with DAO during the year to develop a special one-off priority driven research initiative focusing on informing policy to reduce alcohol-related harm, which will be offered in 2012/13.

## Preventing overweight and obesity

The rates of overweight and obesity in the community have increased dramatically in the last two or three decades now affecting more than two thirds of adults and around a quarter of children in WA. Being overweight or obese is a major factor in the development of chronic diseases such as cancer, coronary heart disease and type 2 diabetes. The main cause is insufficient physical activity combined with the over-consumption of energy dense foods and drinks. In the current strategic period, Healthway has placed greater emphasis on projects and sponsorships that encourage physical activity and promote healthy eating. In 2011/12 Healthway allocated almost one third of its budget for projects and sponsorships on activities aimed at preventing overweight and obesity.

Healthway's co-sponsorship policy has significantly reduced promotions for energy dense foods and drinks at Healthway-sponsored events and activities.

Forty four per cent of the sponsorship program budget was allocated to the prevention of overweight and obesity. The health promotion messages used in sponsorship were Be Active, Go for 2 & 5 and Find Thirty Everyday. These messages were used to engage the target audience across a number of art, sport and racing programs in WA.

A key partnership for Healthway during 2012 was the sponsorship of the Western Australian Trotting Association promoting the Find Thirty Everyday health message. This was a key strategy to target families and young people in the Perth community and create awareness of the benefits of physical activity. The location of the venue and the nature of the events provided an opportunity for Healthway to develop innovative strategies and engage the spectators and participants in activities with the aim of changing behaviours.

The health messages promoting physical activity and nutrition were also allocated to a number of sporting activities such as gymnastics, water polo, synchronised swimming and various local shire physical activity coordinator schemes. This enabled Healthway to reach and connect with people who participate in sporting activities that tend to have a lower profile than some other sports.

Healthway focused on engaging the community in activities promoting healthy nutrition and exercise through sponsorships with organisations such as Spare Parts Puppet Theatre, Awesome Arts and the West Australian Ballet. Healthway promoted the Go For 2 & 5 message significantly through a number of community based arts festivals such as the 2012 Pinjarra Festival, the Nannup Music Festival, the Funtabulous Kidsfest in Bunbury and the Araluen's Fremantle Chilli Festival. The Be Active message was promoted through a large number of arts sponsorships including the 2012 Festival of Busselton and the WA Circus School's Annual Circus and Community Outreach Program. The Be Active message was also aligned with a number of sponsorships with dance organisations including Buzz Dance Theatre, Youth Ballet WA and Steps Youth Dance Company. This was to ensure consistent promotion of the health message within particular segments of the art industry and to maximise reach of Healthway's priority populations.

Healthway continued to work with the WA School Canteen Association and partner organisations to improve supply and access to healthy food choices during 2011/2012. The Healthy Club Sponsorship

Program continued to encourage grass-roots sporting clubs to undertake canteen reform and increase healthy food choices.

Several new research grants funded in 2011/12 have a strong focus on preventing overweight and obesity. The Healthway post-doctoral Fellowship in 2011/12 was awarded to Dr Sarah Foster from the University of WA, and will maximise the use of data from earlier research to will explore the relative influence of the built and social environments on mental health and physical activity across the life course. A Starter Grant awarded to Dr Marian Tye from Curtin University in 2011/12 will support the first phase of an innovative research study to explore on the impact of workplace design on sedentary behaviour, and a PhD scholarship awarded to Clover Maitland in the University of WA will support research investigating the influence of the home physical environment on children's sedentary activities and their use of computer-based 'exergames'.

## Mental health promotion

Mental ill-health is the leading cause of the non-fatal burden of disease and injury in the community. The 2010 WA Health and Wellbeing survey found that more than 25% of adults report symptoms of moderate or high levels of psychological distress, and in 2007-2008 the Australian Government spent \$5.32 billion on mental illness services. Research shows that people's mental health and resiliency skills can be strengthened through health promotion approaches that support them to participate in community activities and develop their social support networks.

Healthway makes a significant contribution to promoting positive mental health through supporting diverse community sport, arts and recreational activities. In 2011/12 Healthway allocated 16.5% of its project and sponsorship funding to projects promoting positive mental health. This included continued funding through the health promotion project grants program towards the internationally recognised Mentally Healthy WA Campaign, which in 2011/12 celebrated 10 years since Healthway initiated the early scoping research which led to the development of the campaign. The Act-Belong-Commit message promoted through the campaign has been adopted across WA, and is supported by more than 70 organisations as community partners and collaborating partners state-wide. The campaign

has also been adopted by other Australian states and internationally.

Eleven percent of the sponsorship program budget was allocated to the promotion of good mental health. The health message to promote this was Act-Belong-Commit, a campaign managed by Mentally Healthy WA. This message was used to interact with the target audience across a number of art and sport programs in WA.

Continued support for the Avon Descent in 2011 saw the Act-Belong-Commit message aligned to one of WA's premier sporting events and the toughest white water race in the world. This was an important sponsorship for Healthway as it was instrumental in highlighting the mental health benefits of volunteering, participating and being part of a team.

The arts sponsorship program continued to strongly promote positive mental health in 2011/12 through the Act-Belong-Commit message with it being allocated to over 80 arts programs and events. A major event which received sponsorship to promote the Act-Belong-Commit message was YOH Fest; the youth on health drama festival. The annual multi arts event requires high school students to develop and perform their own dance sequence, drama play, visual art piece or short film on a relevant youth health theme and was a great success in 2011. The Act Belong Commit message was also allocated to a large number of metropolitan and regional arts events in WA including WA's Shakespeare in the Park, the Mandurah Stretch Festival, the Collie Country Music Round Up and the Goldfields Performing Arts Festival.

A three-year Indigenous Research Training Scholarship awarded to Michelle Webb at Curtin University in 2011/12 is focusing on identifying strengths that can be built on to support mental health resilience within Aboriginal families and communities, and will inform the development of culturally appropriate prevention and intervention programs. A Starter Grant awarded to Associate Professor Stacey Waters at Edith Cowan University's Child Health Promotion Research Centre will focus on the challenges faced by families with adolescent children and with a fly in/fly out (FIFO) parent. The research will collaborate with agencies such as Ngala and Relationships Australia to develop and test strategies for families to address the stresses caused by routine and repeated absence/presence cycles of the FIFO parent.

# AGENCY PERFORMANCE (CONTINUED)

## REDUCING INEQUALITIES

Some population groups are known to be at highest risk of poor health, or have unhealthier lifestyles or behaviours. These include Aboriginal people, rural and remote populations, economically, socially or educationally disadvantaged groups, and others experiencing inequalities. In 2011/12 Healthway continued to prioritise health promotion activities focusing on these groups. Healthway also supported research and local projects to better understand how they can be supported to have healthier lifestyles.

Healthway's strong focus on regional and remote areas is aligned with the WA government goal of improving the overall quality of life for people living in remote and regional areas of the state. Children and young people remain an important target group for Healthway in the current strategic period, reflecting the evidence linking early childhood experiences and behaviours with lifelong patterns of health.

### **Increase the focus on promoting and improving health in population groups where health inequalities exist.**

Healthway has a strong focus on allocating resources to supporting projects that reach high priority target groups. In 2011/12 Healthway allocated funds to high priority target groups across all its program areas as follows:

### **Projects and funding to high priority groups in 2011/12 across Healthway programs;**

Priority group	% of total projects in 2011/12	% of total program budget in 2011/12
Indigenous people	37.2%	54.0%
Rural and remote populations	47.2%	60.1%
Children and Youth	91.9%	76.6%
Other disadvantaged groups e.g. low income	35.8%	60.7%

NB. This classification allows for multiple responses therefore the %'s in the table add to more than 100%

In 2011/12, 37.2% of projects reached Aboriginal people and 54% of funding was allocated to activities that included Aboriginal people.

Similarly 47.2% of projects and 60.1% of funding for projects and sponsorships was allocated to activities that reached rural and remote populations. In addition, 91.9% of projects included children and youth, with 76.6% of funding allocated to activities reaching children and youth, and 35.8% of projects included other disadvantaged groups such as people on low incomes and culturally and linguistically diverse groups, with 60.7% of funding allocated to activities that included these groups.

In the health promotion projects program, 75% of funded projects in 2011/12 included children or young people, reflecting the increase in popularity in recent years of the grants Healthway offers to schools across WA to tackle tobacco, nutrition, physical activity and mental health. More than 20 of these grants were awarded to schools across WA in 2011/12.

A three-year Research Project Grant was awarded in 2011/12 to Professor Mohan Isaac in the University of WA to adapt a South Australian program for WA to support adults with a mental illness who are at risk of or have a chronic physical health problem, to self-manage their physical health conditions through adopting healthier behaviours. In addition, a Starter Grant awarded in 2011/12 to Dr Emma Croager at the Cancer Council WA will support a pilot study to investigate the impact of spaced education, a new, evidence-based form of on-line education delivered by email, on cancer knowledge among Aboriginal health professionals.

In the sponsorship program, there was a focus on partnering organisations that were targeting and reaching Healthway's priority populations.

The sport sponsorship area worked with many organisations that were undertaking development programs and events in regional and remote areas. Sponsorship of the Garnduwa Amboorny Wirnan Aboriginal Corporation's Be Active Community project was renewed in 2011/12. This program assisted remote Indigenous communities to deliver sustainable sport and recreation programs through the development of community based plans and the establishment of community recreation officers. Sponsorship of the Western Desert League Carnival commenced in 2011/2012. This program assisted remote Indigenous communities to deliver a sustainable football and softball sports carnival that travels to various towns within the East Pilbara region of WA.



Healthway was pleased to provide ongoing support for long term partner organisations such as WA Disabled Sports Association, Wheelchair Sports WA, Special Olympics, Riding for the Disabled WA and Sailability WA which significantly increased opportunities for people with a disability to access quality physical activity programs within the state. Healthway also explored opportunities to partner new organisations during the year such as Goalball Western Australia. Goalball is a team sport designed for blind athletes.

The racing sponsorship portfolio saw the number of regional and remote events increase with the sponsorship of the Harvey District Trotting Club and the Wagin Trotting Club. Healthway was also provided with the opportunity to promote a health message in the Esperance and Narrogin regions via new partnerships with the Esperance Speedway Association and the Narrogin Race and Pace.

The arts program area continued sponsorship of education programs that involved undertaking workshops with a number of schools in WA.

The sponsorship of the West Australian Symphony Orchestra's Education Chamber Orchestra (ECHO) program provided an opportunity to promote the Smarter than Smoking message to young people attending school's in low socio economic areas in the metropolitan and outer metropolitan areas of Perth.

### **Improve knowledge and understanding to address the determinants and modifiers of health inequalities.**

A key focus of Healthway's research and health promotion projects program is on improving knowledge and understanding to address health inequalities. A health promotion grant awarded to the Multicultural Services Centre of WA will train bilingual support workers in eight CALD communities in the Perth metropolitan area as healthy lifestyle trainers, who will support their community members to adopt healthier lifestyles within their own cultural values and belief frameworks.

A major five year Research into Practice Grant was awarded during the year to Professor Sandra Thompson in the Combined Universities Centre for Rural Health. This research will involve a participatory action research framework and will seek to define the attributes of successful partnership models between Aboriginal and mainstream organisations to address the social determinants of health. This

innovative research project is a component of a major partnership program between the Combined Universities Centre for Rural Health (CUCRH) and 13 key Aboriginal organisations forming the Midwest Aboriginal Organisations Alliance (MAOA), which is seeking to address key areas of concern for Aboriginal people in the region.

### **Build awareness and support for groups who are experiencing inequalities.**

In 2011/2012 Healthway staff and managers contributed to committees and seminars to promote Healthway's objectives and explain funding opportunities. Examples included meeting with groups in the Kimberley and Great Southern to explain funding opportunities during Healthway's regional consultations for the new Strategic Plan. Healthway staff have also continued to contribute to interagency funding seminars and to training for around 20 regional Mentally Healthy WA project officers, who provide support and guidance to potential grant and sponsorship recipients in regional areas.

Since 2006 Healthway has funded a Regional Coordinator position in the Kimberley, with a role to support potential sponsorship and grant applications in the region and provide support for funded sponsorships and projects. During 2011/12 the Coordinator provided varying levels of support for around 15 Healthway sponsorships in the region, including small 'under \$5,000' sponsorships and Healthy Clubs. The position has also run a local grants scheme during the year, providing a mechanism for awarding small sums of money in a way that is responsive to the needs of the Indigenous community. Healthway's focus on building awareness and support for groups experiencing inequalities aligns with the WA government's goal of social responsibility.

# AGENCY PERFORMANCE (CONTINUED)

## BUILDING & USING THE EVIDENCE

Healthway has a strong commitment to supporting work that contributes to the evidence base in health promotion and builds on what is already known to be effective. This is a key theme in the Healthway 2008-2011 Strategic Plan and Healthway is in a strong position to support high quality research and projects to address gaps in current knowledge, particularly with respect to priority population groups.

### **Focus on improving & increasing the translation of research findings into effective and sustainable policy and practice in health promotion.**

A strong focus for Healthway's work is on increasing the translation of research findings into effective and sustainable policy and practice. As a result of the introduction of a new 5 year Research into Practice Grant initiative in 2009, Healthway is currently supporting five of these major research translation studies, comprising two with a focus on physical activity and one each with a focus on mental health and bullying, nutrition, and Aboriginal health.

Planning work was also undertaken with the Drug and Alcohol Office during 2011/12 to identify common research priorities in the alcohol area, which will be the focus of a special one-off research initiative in 2012/13 to generate data to inform policy around reducing alcohol-related harm.

During the year Healthway organised two seminars focusing on sharing and communicating results from health promotion research to audiences of practitioners, policy-makers and researchers. The first focused on conducting research with Aboriginal communities and included Healthway Indigenous Training Scholarship holder Leanne Pilkington as a co-Chair, as well as a presentation from Professor Sandra Thompson from the Combined Universities Centre for Rural Health in Geraldton, who presented on some of her Healthway-funded research. The second seminar included a presentation from Healthway Senior Fellowship holder Associate Professor Lisa Wood, who presented on her Healthway Starter Grant which focused on children's patterns of play. Associate Professor Wood also outlined her collaboration with Kings Park Botanic Gardens and Parks Authority in the design of their new Naturescape area, providing an excellent example of research translation.

Independent evaluation by an academic research group has always been a key feature of Healthway's work, and during 2011/12 the Health Promotion Evaluation Unit (HPEU) at UWA continued to conduct evaluations of the Healthway sponsorship program and major health promotion projects. The group published more than ten papers and brief reports during the year on the effectiveness of Healthway programs, including several papers based on a comprehensive evaluation of Healthway's sponsorship of the 2011 Perth Royal Show. During 2011/12 the HPEU also completed a review of state, national and international health promotion priorities and trends for Healthway, to help inform the development of the next Strategic Plan.

### **Continue to nurture quality research and evaluation in WA.**

Healthway is committed to supporting high quality research in WA and in 2011/12 allocated approximately \$2.5 million to research grants and scholarships, with around \$1 million allocated to new research projects, scholarships and fellowships. The Healthway Research Program is based on a competitive funding model, and all major research applications undergo a comprehensive review process involving assessment by up to 4 independent experts from outside WA to ensure rigour and transparency of decision-making.

In 2011/12 Healthway awarded 13 new research grants in total out of 51 applications received, including Starter Grants, Research Project grants, Research into Practice Grants, Graduate and Indigenous Scholarships, a Fellowship and a Visiting Fellowship. All of the successful applications addressed high priority health issues and/or target groups for Healthway.

## SUSTAINABLE CHANGE

Successful and effective health promotion programs and activities have components that can be sustained over time to achieve lasting improvements in the health of the community. All Healthway projects and programs aim to include sustainable outcomes as a key component, either in terms of maintaining behavioural changes, program or policy sustainability.

### **Recognise and support the variety of ways sustainable change can be achieved across programs.**

Healthway's revised sponsorship program introduced a set of minimum health policy requirements for all sponsored organisations from 1 July 2010, including completely smoke-free indoor and outdoor areas, free drinking water, provision of healthy food choices where food is served and low-alcohol options where alcohol is served. Previous evaluations have shown that once organisations introduce healthy environment policies, these are generally maintained by the organisation because of public popularity, even if the Healthway funding is only short term.

The partnership with the Western Australian Trotting Association at Gloucester Park and the Perth Royal Show delivered significant outcomes for Healthway during 2011/2012. The structural reform sponsorships provided an avenue for significant sustainable change to be achieved in relation to normalising smokefree environments, the provision of healthy food and drink choices as well as alcohol practices that support a reduction in alcohol related harm.

The Healthy Club Program continued to achieve sustainable change by assisting sporting clubs to develop and implement health policies designed to create a healthy sporting environment. The program provides increased access to education and training opportunities for club coaches and officials. In 2011/12 there were 406 Healthy Club sponsorship applications received with 327 or 81% being successful.

Healthway continued the Venue Sponsorship program in 2011/12 with the Perth Zoo promoting an outdoor smoke free policy first introduced in 2010. Healthway entered into a new venue sponsorship in 2011 with VenuesWest to introduce a number of structural reform initiatives throughout its key locations with a focus on smoke free outdoor areas and healthier options in vending machines.

Healthway has continued to work in partnership with the WA School Canteen Association (WASCA) to improve the provision of healthy food and drink options in sponsored sport and recreation venues. In 2011/12 this partnership continued with WASCA working with several sponsored organisations to improve healthy food and drink options within their canteens and catering facilities.

Behavioural sustainability in Healthway sponsorship projects is evaluated every two years using the HPEU series of audience surveys at sponsored events, the 'Sponsorship Monitor', which measures audience awareness, understanding, attitudes, intentions and behaviours in relation to health messages promoted at the events. In 2011/12, the Sponsorship Monitor was implemented in a sample of larger Healthway message promotion sponsorships. The results show that 76% of people attending Healthway-sponsored events during the year were aware of the message promoted at the event and nearly 15% reported changing their behaviour as a result of exposure to the message at a previous event.

# AGENCY PERFORMANCE (CONTINUED)

## INVESTING IN THE FUTURE - BUILDING HEALTH PROMOTION CAPACITY

Capacity building in health promotion is a critical strategy for improving the health of the population in a way that is sustainable, through developing skills and organisational structures, and through provision of resources.

The Healthway strategic plan for 2008-2011 identifies a commitment to increasing the capacity of the health promotion workforce in WA. This includes supporting the development of health promotion leaders, funding scholarships and facilitating collaborative partnerships between researchers, policy makers and practitioners. Healthway also recognises that capacity building should not be confined to the health promotion workforce and is committed to increasing health promotion leadership and literacy across sectors, Healthway stakeholder groups and at the community and individual levels.

### **Contribute to the development of an effective health promotion workforce in WA.**

Healthway has maintained a commitment to building capacity for health promotion in WA for many years, by investing in workforce development through scholarships, fellowships, traineeships and other development opportunities. Healthway Health Promotion Graduate Scholarships and Fellowships offer funding for up to three years to support Masters, Doctoral and post-doctoral research in health promotion.

In 2011/12 Healthway funded two Health Promotion Graduate Scholarships, an Indigenous Research Training Scholarship and a post-doctoral Research Fellowship to students at the University of WA and Curtin University. All the new researchers are conducting studies that address Healthway high priority health areas. Two out of four Starter grants funded by Healthway in 2011/12 were awarded to new researchers, defined as 'junior' researchers who have not previously held major competitive research grants.

A Healthway Visiting Fellowship co-ordinated by the Koya Aboriginal Corporation, involved workshops and seminars facilitated in late June/early July 2011 by Professor Deborah Johnson and Dr James Bruce from North America, two leading experts in cultural exclusivity and mental health promotion for Indigenous American and African youth and

families. The Visiting Fellows worked with a number of Aboriginal and non-Aboriginal organisations and community groups in WA to share their expertise on culturally inclusive approaches to mental health promotion and overcoming racism and disadvantage for Indigenous youth.

The Visiting Fellowship awarded in 2011/12 will involve a visit in October 2012 by Michael DeGagne, Executive Director of the Aboriginal Healing Foundation in Ottawa, Canada, whose area of expertise is in Aboriginal health and reconciliation. The Foundation runs a research program in Indigenous health and reconciliation and his visit will share knowledge of the Foundation's successes and failures and how community health promotion might be supported and nurtured in this area in WA.

Workforce development also includes sharing and disseminating knowledge from funded programs. Healthway held two research seminars in 2011/12, attended by around 100 people, including professionals based in regional areas who accessed the seminars by videoconference. Healthway staff have also contributed to the health promotion and public health teaching programs at the University of WA, Curtin and Edith Cowan Universities during the year.

### **Contribute to the development of health promotion skills in sectors outside health.**

The Healthway sponsorship team supports sponsored sport, arts and racing organisations to effectively implement strategies to promote healthy lifestyles, and this includes developing a range of innovative strategies designed to leverage the health messages promoted through sponsored activities. Healthway also guides and supports community groups and agencies from sectors outside health to apply for health promotion project funding, including linking prospective applicants with health promotion experts at local level, who can assist in project delivery. In 2011/12 Healthway supported Farmsafe WA, the Multicultural Services Centre of WA and a number of schools to successfully apply for health promotion grant funding. During 2011/12 Healthway also contributed to professional development for Mentally Healthy WA local staff, who include local government and community organisation staff as well as health professionals.

Healthway is one of the inaugural members of the International Network of Health Promotion

Foundations, which has a role to share experiences internationally on effective programs and support the development of new Foundations. In 2011/12 Healthway continued to contribute to the work of the Network, which has led to the development of strong national and international collaborations.

**Develop and nurture the expertise of individuals and groups working within health promotion to ensure that high quality, innovative and effective health promotion work continues in WA.**

In 2011/12 Healthway funding continued to the Australian Health Promotion Association WA Branch (AHPA-WA), to support the highly successful Healthway/AHPA Graduate Scholarship and ATSI Traineeship programs. The scheme has supported around 40 graduates and approximately 14 Aboriginal people to develop their careers in health promotion over more than 15 years.

Healthway also opened a new Capacity Building Scholarship funding round during the year to support people working in regional and remote WA to attend the 7th World Conference on the Promotion of Mental Health and Prevention of Mental and Behavioural Disorders, which will be held in October 2012. This major conference will be the largest of its kind in WA, attracting delegates and speakers from across the globe and will showcase a number of Healthway-funded initiatives including the Mentally Healthy WA campaign.

# DISCLOSURES & LEGAL COMPLIANCE

## GOVERNANCE DISCLOSURES

Governance disclosures relate to government policy requirements, such as those regarding potential conflict of interest or ministerial directives.

### Ministerial Directives

No Ministerial directives were received during the financial year.

### Contracts with Senior Officers

In accordance with the Treasurer's Instruction 903, senior officers are required to disclose particulars outside of normal contracts of employment, of any interest in any existing or proposed contract which the senior officer; or a firm of which a senior officer is a member; or an entity in which a senior officer has a substantial financial interest, has made with the agency or any subsidiary body, related body or affiliated body of the agency.

At the date of reporting, other than normal contracts of employment of service, no senior officer, or firms of which senior officers are members, or entities in which senior officers have a substantial interests, had any interests in existing or proposed contracts with Healthway.

In accordance with the Treasurer's Instruction 903 senior officers are required to disclose the particulars of any shares in any subsidiary body of the agency held as a nominee or held beneficially. In 2011/12, no senior officer held shares in any subsidiary body of the agency held as a nominee or held beneficially.

### Indemnity Insurance Premium

Healthway covers members of the Healthway Board and senior management under a Directors and Officers Liability Insurance policy limited to \$5 million at a cost of \$4,686 (excl gst). Board members make a small contribution towards the premium costs.

## OTHER DISCLOSURES

### Employment and Industrial Relations

#### Staff Profile

Employee Profile	2011-12	2010-11
Full-time Permanent	14	13
Part-time Permanent (FTE basis)	0.5	1
Fixed Term Full Time	6	1
Total FTE	20.5	15

During 2011/12 previously outsourced services returned in-house which resulted in number of fixed term contracts being approved. Where operationally practical, employees continued to be provided with options for flexible working arrangements.

Healthway has some 66% of women in management within Tiers 2 and 3 of the organisational structure and continues to support women in leadership roles. Healthway has also completed its Workforce Plan 2012-2017 which continues to support flexible work practices and also focuses on increasing diversity on its Board, Advisory Committees and workforce. Cultural awareness training was also undertaken in 2011-12 with staff.

### Staff Development

Healthway is committed to developing a workforce that is highly competent, ethical, innovative and responsive to change.



During the year Healthway continued to support women in leadership and funded a placement on the Health Promotion Leadership Program, in addition to various other study courses and workshops. Other tailored courses were also provided to staff and supported training in first aid, dealing with difficult customers and occupational safety and health and records management. Workshops were undertaken within teams, focusing on areas such as time management and participation in awareness raising workshops on human resource management policies and practices.

## **Industrial Relations**

There were no industrial issues during the year and no services to the public were disrupted.

## **Occupational Safety and Health and Injury Management**

(Public Sector Commissioner's Circular 2009-11: Code of Practice: Occupational Safety and Health in the Western Australian Public Sector)

### **Statement of agency's commitment to OSH and injury management with an emphasis on Executive commitment**

Healthway maintains its strong commitment to a culture of safety awareness ensuring all staff and visitors are provided with a safe and healthy workplace.

A Policy and Procedures Manual sets out Healthway's commitment to provide a safe and healthy work environment and outlines guidelines and procedures to ensure compliance with the Occupational Safety and Health Act 1984, Workers' Compensation and Injury Management Act 1981 and related codes of practice and standards.

Executive commitment is highlighted in the Policy and Procedures Manual and all new staff are made aware of the strong culture and commitment towards a safe and healthy workplace. As part of their induction new staff are also made aware of their role in upholding a safe and healthy workplace environment.

Relevant strategic issues on health and safety matters continue to be raised and discussed at regular corporate executive meetings with a standard agenda item set for this purpose. A refresher session on the health and safety duties and responsibilities of managers was also undertaken.

### **Description of the formal mechanism for consultation with employees on OSH matters.**

Regular staff meetings provide a forum for OSH consultation within Healthway. OSH is a standing agenda item and staff are encouraged to raise and discuss occupational safety and health issues.

Occupational safety and health and injury management information is available to staff on Healthway's internal system and relevant information is communicated to new staff through Healthway's induction processes.

Healthway has two trained Occupational Health and Safety Officers who undertake required regular inspections of the workplace and report and raise with staff any issues they identify. These officers are accessible to all staff for discussion and resolution of occupational safety and health issues.

Staff notice boards contain relevant OSH information, including details of health, safety, first aid, grievance, evacuation and emergency contacts.

### **Statement of compliance with injury management requirements of the Workers' Compensation & Injury Management Act 1981 including the development of return to work plans.**

Healthway's OSH Policy and Procedures Manual contains a documented Injury Management Policy and Procedure which states its commitment to compliance with the Workers' Compensation and Injury Management Act 1981 by providing injury management support to all workers who sustain a work related injury or illness with a focus on safe and early return to meaningful work.

## DISCLOSURES & LEGAL COMPLIANCE (CONTINUED)

The policy and procedures confirm that return to work programs are developed in accordance with the Act and should any staff suffer a work related injury the programs would be available immediately to them.

**Statement confirming that an assessment of the occupational safety and health system has been completed (within the past five years or sooner depending on the risk profile of the agency) using a recognised assessment tool and reporting percentage of agreed actions completed.**

In 2009/2010 an external consultant was engaged to assess Healthway's occupational safety and health system. The consultant using a gap analysis assessment tool compliant with the AS/NZS4801:2001 reported that overall Healthway was compliant with OSH requirements and OSH had high visibility in the organisation. A few areas for improvement were identified and these were addressed in an Action Plan with responsibilities and target dates set for completion. All agreed actions were completed in 2010/2011.

2011/12 highlights in OSH included:

- Two Healthway Officers with OSH responsibilities undertook a five day Introductory Training Course for Safety and Health Representatives.
- A refresher program was provided to corporate executives with regard to their OSH and injury management responsibilities.
- An external ergonomic assessor was engaged to review staff workstations to minimise the risk of injury and maximise comfort and productivity.
- Promotion of Healthway's health and wellbeing program encouraging healthy lifestyles and supporting work life balance initiatives, including regular health assessments, influenza vaccinations, salad days, fruit bowl and access to physical activity programs and topical workshops.
- An Employee Assistance Program continues to be available to Healthway staff and their immediate family for confidential and incident counselling services.
- Corporate executive position statements were reviewed and OSH responsibilities checked for relevance and clarity.
- First Aid and Emergency procedures were reviewed and updated.
- Front reception and customer handling procedures were reviewed and enhanced to address potentially difficult or unsafe situations.

**A report of annual performance for 2011-2012 against the following:**

Indicator	2011/12 Target	2011/12 Actual
Number of fatalities	0	0
Lost time/injury/diseases (LTI/D) incidence rate	0	0
Lost time injury/diseases severity rate	0	0
Workers compensation claims	0	0
Percentage of managers trained in occupational safety and health and injury management responsibilities	100	100

## OTHER LEGAL COMPLIANCE

### Advertising

In accordance with section 175ZE of the Electoral Act 1907, details of expenditure incurred during 2011/12 are set out below:

Category	Name of Agency	Amount expended
Advertising Agencies	Adcorp Australia	\$424 (exc GST)
Market research organisations		Nil
Polling organisations		Nil
Direct mail organisations		Nil
Media advertising organisations		Nil

### Recordkeeping Plans

In March 2012 Healthway implemented a new Electronic Document Records Management System (EDRMS) Solution using TRIM for all new records received, created or managed by Healthway. Existing paper based records are managed and retained in accordance with the approved Record Keeping Plan and Retention and Disposal Schedule which were approved by the State Records Commission for 5 years from September 2010.

Implementation of the new EDRMS has incorporated a review of existing policies and procedures and comprehensive training for staff in TRIM and in the use of TRIM Explorer. The implementation was supported by extensive consultation with user groups and identification of business needs which assisted with a smooth transition and acceptance of the new EDRMS.

Healthway continues to comply with the State Records Act 2000 and State Records Commission Standard 2, Principle 6.

State Records Commission - Standard 2, Principle 6 - Compliance	
Compliance Indicator	Healthway Compliance
The efficiency and effectiveness of Healthway's recordkeeping systems has been evaluated.	This requirement was met with the revision of our RKP in 2010 and its approval on 25 September 2010 by the State Record Commission. Continuation of our Retention and Disposal Schedule was also approved. Regular audits of paper based records in our file compactus continue to be undertaken.
Healthway conducts a recordkeeping training program.	Extensive training was given to Corporate Services staff responsible for the implementation and on-going management of the HP TRIM and TRIM Explorer. All other staff have been trained in the use of TRIM Explorer and a systematic mentoring program was initiated to ensure a smooth transition to the new EDRMS and engender an understanding of records management and each officer's role in this function.
The efficiency and effectiveness of Healthway's recordkeeping training program is reviewed from time to time.	The mentoring team meets weekly to review the transition to the new EDRMS and monthly staff meetings continue to provide the forum for staff to openly discuss the effectiveness of recordkeeping training and identify requirements for further training.
Healthway's induction program addresses employee roles and responsibilities in regard to their compliance with the recordkeeping plan.	The Induction Program continues to provide initial recordkeeping training to new staff and the Induction Manual includes records management policies and procedures. The induction manual can be accessed by staff via our internal network. The new EDRMS has involved a comprehensive review of policies and procedures and these are included in the Induction Manual as they are completed. A comprehensive TRIM User Guide has also been prepared for staff and this is being reviewed on a weekly basis by the mentoring team.

# DISCLOSURES & LEGAL COMPLIANCE (CONTINUED)

## **Compliance with Public Sector Standards and Ethical Codes**

In accordance with s31(1) of the Public Sector Management Act 1994, Healthway is required to report on compliance with Public Sector Standards in Human Resource Management and Codes of Ethics and Codes of Conduct.

During the year there were no breaches of public sector standards claims lodged and no claims for breaches of Codes of Ethics.

Healthway continued to foster a culture valuing high work ethics and integrity. Healthway requires all staff to participate in training on "Accountable and Ethical Decision-Making in WA Public Sector". In addition, Cultural Awareness training was also undertaken in 2011/12 which also revisited the Healthway values. This will be further developed through a values workshop scheduled for later in 2012. During the year human resources policies, Codes of Ethics and Codes of Conduct were reviewed and awareness raising workshops were undertaken. Information regarding these is published Healthway's intranet and the induction for new staff was also reviewed with face to face inductions continuing to be undertaken.

A Workforce Plan 2012-2017 was completed that continues to support key human resources strategies to attract, retain and develop staff. It also supports increasing diversity on Healthway's Board, Committees and its workforce.

# OPINION OF AUDITOR GENERAL



## Auditor General

### INDEPENDENT AUDITOR'S REPORT

To the Parliament of Western Australia

### WESTERN AUSTRALIAN HEALTH PROMOTION FOUNDATION

#### Report on the Financial Statements

I have audited the accounts and financial statements of the Western Australian Health Promotion Foundation.

The financial statements comprise the Statement of Financial Position as at 30 June 2012, the Statement of Comprehensive Income, Statement of Changes in Equity and Statement of Cash Flows for the year then ended, and Notes comprising a summary of significant accounting policies and other explanatory information.

#### *Board's Responsibility for the Financial Statements*

The Board is responsible for keeping proper accounts, and the preparation and fair presentation of the financial statements in accordance with Australian Accounting Standards and the Treasurer's Instructions, and for such internal control as the Board determines is necessary to enable the preparation of financial statements that are free from material misstatement, whether due to fraud or error.

#### *Auditor's Responsibility*

As required by the Auditor General Act 2006, my responsibility is to express an opinion on the financial statements based on my audit. The audit was conducted in accordance with Australian Auditing Standards. Those Standards require compliance with relevant ethical requirements relating to audit engagements and that the audit be planned and performed to obtain reasonable assurance about whether the financial statements are free from material misstatement.

An audit involves performing procedures to obtain audit evidence about the amounts and disclosures in the financial statements. The procedures selected depend on the auditor's judgement, including the assessment of the risks of material misstatement of the financial statements, whether due to fraud or error. In making those risk assessments, the auditor considers internal control relevant to the Foundation's preparation and fair presentation of the financial statements in order to design audit procedures that are appropriate in the circumstances. An audit also includes evaluating the appropriateness of the accounting policies used and the reasonableness of accounting estimates made by the Board, as well as evaluating the overall presentation of the financial statements.

I believe that the audit evidence obtained is sufficient and appropriate to provide a basis for my audit opinion.

#### **Opinion**

In my opinion, the financial statements are based on proper accounts and present fairly, in all material respects, the financial position of the Western Australian Health Promotion Foundation at 30 June 2012 and its financial performance and cash flows for the year then ended. They are in accordance with Australian Accounting Standards and the Treasurer's Instructions.

# OPINION OF AUDITOR GENERAL (CONTINUED)

## **Report on Controls**

I have audited the controls exercised by the Western Australian Health Promotion Foundation during the year ended 30 June 2012.

Controls exercised by the Western Australian Health Promotion Foundation are those policies and procedures established by the Board to ensure that the receipt, expenditure and investment of money, the acquisition and disposal of property, and the incurring of liabilities have been in accordance with legislative provisions.

### *Board's Responsibility for Controls*

The Board is responsible for maintaining an adequate system of internal control to ensure that the receipt, expenditure and investment of money, the acquisition and disposal of public and other property, and the incurring of liabilities are in accordance with the Financial Management Act 2006 and the Treasurer's Instructions, and other relevant written law.

### *Auditor's Responsibility*

As required by the Auditor General Act 2006, my responsibility is to express an opinion on the controls exercised by the Western Australian Health Promotion Foundation based on my audit conducted in accordance with Australian Auditing and Assurance Standards.

An audit involves performing procedures to obtain audit evidence about the adequacy of controls to ensure that the Foundation complies with the legislative provisions. The procedures selected depend on the auditor's judgement and include an evaluation of the design and implementation of relevant controls.

I believe that the audit evidence obtained is sufficient and appropriate to provide a basis for my audit opinion.

## **Opinion**

In my opinion, the controls exercised by the Western Australian Health Promotion Foundation are sufficiently adequate to provide reasonable assurance that the receipt, expenditure and investment of money, the acquisition and disposal of property, and the incurring of liabilities have been in accordance with legislative provisions during the year ended 30 June 2012.

## **Report on the Key Performance Indicators**

I have audited the key performance indicators of the Western Australian Health Promotion Foundation for the year ended 30 June 2012.

The key performance indicators are the key effectiveness indicators and, the key efficiency indicators that provide information on outcome achievement and service provision.

### *Board's Responsibility for the Key Performance Indicators*

The Board is responsible for the preparation and fair presentation of the key performance indicators in accordance with the Financial Management Act 2006 and the Treasurer's Instructions and for such controls as the Board determines necessary to ensure that the key performance indicators fairly represent indicated performance.

### *Auditor's Responsibility*

As required by the Auditor General Act 2006, my responsibility is to express an opinion on the key performance indicators based on my audit conducted in accordance with Australian Auditing and Assurance Standards.

An audit involves performing procedures to obtain audit evidence about the key performance indicators. The procedures selected depend on the auditor's judgement, including the assessment of the risks of material misstatement of the key performance indicators. In making these risk assessments the auditor considers internal control relevant to the Board's preparation and fair presentation of the key performance indicators in order to design audit procedures that are appropriate in the circumstances. An audit also includes evaluating the relevance and appropriateness of the key performance indicators for measuring the extent of outcome achievement and service provision.

I believe that the audit evidence obtained is sufficient and appropriate to provide a basis for my audit opinion.

**Opinion**

In my opinion, the key performance indicators of the Western Australian Health Promotion Foundation are relevant and appropriate to assist users to assess the Foundation's performance and fairly represent indicated performance for the year ended 30 June 2012.

**Independence**

In conducting this audit, I have complied with the independence requirements of the Auditor General Act 2006 and the Australian Auditing and Assurance Standards, and other relevant ethical requirements.

**Matters relating to the electronic presentation of the audited financial statements**

This audit report relates to the financial statements of the Western Australian Health Promotion Foundation for the year ended 30 June 2012 included on the Foundation's website. The Board is responsible for the maintenance and integrity of the Foundation's website. I have not been engaged to report on the integrity of the Foundation's website. The audit report refers only to the financial statements named above. It does not provide an opinion on any other information which may have been hyperlinked to/from these financial statements. If readers of this report are concerned with the inherent risks arising from electronic data communication they should refer to the published hard copy of the audited financial statements and related audit report dated 6 August 2012 to confirm the information included in the audited financial statements presented on this website.



GLEN CLARKE  
DEPUTY AUDITOR GENERAL  
Delegate of the Auditor General for Western Australia  
Perth, Western Australia  
6 August 2012



# FINANCIAL STATEMENT

Western Australian Health Promotion Foundation  
Statement of Comprehensive Income  
For The Year Ended

30 June 2012

	Note	2012 \$	2011 \$
<b>COST OF SERVICES</b>			
Expenses			
Employee benefits expense	6	1,829,361	1,566,238
Supplies and services	7	1,177,490	736,251
Depreciation and amortisation expense	8	46,328	41,193
Accommodation expenses	9	419,447	380,817
Grants and sponsorships	10	18,089,308	18,270,755
Other expenses	11	41,024	44,316
<b>Total cost of services</b>		<b>21,602,958</b>	<b>21,039,570</b>
<b>Income</b>			
Revenue			
Interest revenue	12	908,079	910,258
Other revenue	13	239,249	559,210
<b>Total Revenue</b>		<b>1,147,328</b>	<b>1,469,468</b>
<b>Total income other than income from State Government</b>		<b>1,147,328</b>	<b>1,469,468</b>
<b>NET COST OF SERVICES</b>		<b>20,455,630</b>	<b>19,570,102</b>
<b>INCOME FROM STATE GOVERNMENT</b>			
Service appropriation	14	20,674,000	20,087,000
Total income from State Government		20,674,000	20,087,000
<b>SURPLUS/(DEFICIT) FOR THE PERIOD</b>		<b>218,370</b>	<b>516,898</b>
<b>TOTAL COMPREHENSIVE INCOME/(LOSS) FOR THE PERIOD</b>		<b>218,370</b>	<b>516,898</b>

The Statement of Comprehensive Income should be read in conjunction with the accompanying notes.

Western Australian Health Promotion Foundation  
Statement of Financial Position  
As At

30 June 2012

	Note	2012 \$	2011 \$
<b>ASSETS</b>			
<b>Current Assets</b>			
Cash and cash equivalents	15	8,389,393	9,308,082
Receivables	16	967,385	1,118,381
Other current assets	17	45,055	39,508
<b>Total Current Assets</b>		<b>9,401,833</b>	<b>10,465,971</b>
<b>Non-Current Assets</b>			
Property, plant and equipment	18	43,927	87,110
Intangible assets	19	72,269	-
<b>Total Non-Current Assets</b>		<b>116,196</b>	<b>87,110</b>
<b>TOTAL ASSETS</b>		<b>9,518,029</b>	<b>10,553,081</b>
<b>LIABILITIES</b>			
<b>Current Liabilities</b>			
Payables	20	6,764,287	8,038,975
Provisions	21	234,392	237,911
Other current liabilities	22	98,217	112,738
<b>Total Current Liabilities</b>		<b>7,096,896</b>	<b>8,389,624</b>
<b>Non-Current Liabilities</b>			
Provisions	21	191,253	151,947
<b>Total Non-Current Liabilities</b>		<b>191,253</b>	<b>151,947</b>
<b>TOTAL LIABILITIES</b>		<b>7,288,149</b>	<b>8,541,571</b>
<b>NET ASSETS</b>		<b>2,229,880</b>	<b>2,011,510</b>
<b>EQUITY</b>			
	23		
<b>Accumulated surplus</b>		<b>2,229,880</b>	<b>2,011,510</b>
<b>TOTAL EQUITY</b>		<b>2,229,880</b>	<b>2,011,510</b>

The Statement of Financial Position should be read in conjunction with the accompanying notes.

Western Australian Health Promotion Foundation  
Statement Of Changes In Equity  
For The Year Ended

30 June 2012

	Note	Accumulated surplus/ (deficit)	Total equity
		\$	\$
<b>Balance at 1 July 2010</b>	23	1,494,612	1,494,612
Total comprehensive income for the year		516,898	516,898
<b>Balance at 30 June 2011</b>		<b>2,011,510</b>	<b>2,011,510</b>
<b>Balance at 1 July 2011</b>		2,011,510	2,011,510
Total comprehensive income for the year		218,370	218,370
<b>Balance at 30 June 2012</b>		<b>2,229,880</b>	<b>2,229,880</b>

The Statement of Changes in Equity should be read in conjunction with the accompanying notes.

Western Australian Health Promotion Foundation  
Statement of Cash Flows  
For The Year Ended

30 June 2012

	Note	2012 \$	2011 \$
<b>CASH FLOWS FROM STATE GOVERNMENT</b>			
Service appropriation		20,674,000	20,087,000
<b>Net cash provided by State Government</b>		<b>20,674,000</b>	<b>20,087,000</b>

Utilised as follows:

**CASH FLOWS FROM OPERATING ACTIVITIES**

**Payments**

Employee benefits	(1,808,095)	(1,446,591)
Supplies and services	(1,221,165)	(866,641)
Accommodation	(419,447)	(380,817)
Grants and sponsorships	(19,250,507)	(17,556,280)
GST payments on purchases	(2,099,543)	(1,704,165)

**Receipts**

Interest received	939,907	873,960
GST receipts on sales	10,786	54,489
GST receipts from taxation authority	2,121,540	1,499,926
Other receipts	209,249	559,210

<b>Net cash provided by/(used in) operating activities</b>	<b>24</b>	<b>(21,517,275)</b>	<b>(18,966,909)</b>
--	-----------	---------------------	---------------------

**CASH FLOWS FROM INVESTING ACTIVITIES**

**Payments**

Purchase of non-current physical assets	(75,414)	(39,747)
---	----------	----------

<b>Net cash provided by/(used in) investing activities</b>	<b>(75,414)</b>	<b>(39,747)</b>
--	-----------------	-----------------

Net increase/(decrease) in cash and cash equivalents	(918,689)	1,080,344
--	-----------	-----------

Cash and cash equivalents at the beginning of period	9,308,082	8,227,738
--	-----------	-----------

<b>CASH AND CASH EQUIVALENTS AT THE END OF PERIOD</b>	<b>24</b>	<b>8,389,393</b>	<b>9,308,082</b>
---	-----------	------------------	------------------

The Statement of Cash Flows should be read in conjunction with the accompanying notes.

## **1 Australian Accounting Standards**

### **General**

The Authority's financial statements for the year ended 30 June 2012 have been prepared in accordance with Australian Accounting Standards. The term 'Australian Accounting Standards' refers to Standards and Interpretations issued by the Australian Accounting Standard Board (AASB).

The Authority has adopted any applicable, new and revised Australian Accounting Standards from their operative dates.

### **Early adoption of standards**

The Authority cannot early adopt an Australian Accounting Standard unless specifically permitted by TI 1101 Application of Australian Accounting Standards and Other Pronouncements. There has been no early adoption of Australian Accounting Standards that have been issued or amended (but not operative) by the Authority for the annual reporting period ended 30 June 2012.

## **2 Summary of significant accounting policies**

### **(a) General Statement**

The Authority is a not-for-profit reporting entity that prepares general purpose financial statements in accordance with Australian Accounting Standards, the Framework, Statements of Accounting Concepts and other authoritative pronouncements of the AASB as applied by the Treasurer's instructions. Several of these are modified by the Treasurer's instructions to vary application, disclosure, format and wording.

The Financial Management Act and the Treasurer's instructions impose legislative provisions that govern the preparation of financial statements and take precedence over Australian Accounting Standards, the Framework, Statements of Accounting Concepts and other authoritative pronouncements of the AASB.

Where modification is required and has had a material or significant financial effect upon the reported results, details of that modification and the resulting financial effect are disclosed in the notes to the financial statements.

### **(b) Basis of Preparation**

The financial statements have been prepared on the accrual basis of accounting using the historical cost convention.

The accounting policies adopted in the preparation of the financial statements have been consistently applied throughout all periods presented unless otherwise stated.

The financial statements are presented in Australian dollars rounded to the nearest dollar (\$).

Note 3 'Judgements made by management in applying accounting policies' discloses judgements that have been made in the process of applying the Authority's accounting policies resulting in the most significant effect on amounts recognised in the financial statements.

Note 4 'Key sources of estimation uncertainty' discloses key assumptions made concerning the future, and other key sources of estimation uncertainty at the end of the reporting period, that have a significant risk of causing a material adjustment to the carrying amounts of assets and liabilities within the next financial year.

**(c) Reporting Entity**

The reporting entity comprises the Authority only.

**(d) Income**

**Revenue recognition**

Revenue is recognised and measured at the fair value of consideration received or receivable. The following specific recognition criteria must also be met before revenue is recognised for the major business activities as follows:

**Sale of goods**

Revenue is recognised from the sale of goods and disposal of other assets when the significant risks and rewards of ownership transfer to the purchaser and can be measured reliably.

**Provision of services**

Revenue is recognised by reference to the stage of completion of the transaction.

**Interest**

Revenue is recognised as the interest accrues.

**Service Appropriations**

Service Appropriations are recognised as revenues at fair value in the period in which the Authority gains control of the appropriated funds. The Authority gains control of appropriated funds at the time those funds are deposited to the bank account or credited to the 'Amounts receivable for services' (holding account) held at Treasury.

**Grants, donations, gifts and other non-reciprocal contributions**

Revenue is recognised at fair value when the Authority obtains control over the assets comprising the contributions, usually when cash is received.

Other non-reciprocal contributions that are not contributions by owners are recognised at their fair value. Contributions of services are only recognised when a fair value can be reliably determined and the services would be purchased if not donated.

**Gains**

Realised and unrealised gains are usually recognised on a net basis. These include gains arising on the disposal of non-current assets and some revaluations of non-current assets.

**(e) Property, Plant and Equipment**

**Capitalisation/Expensing of assets**

Items of property, plant and equipment and infrastructure costing \$5,000 or more are recognised as assets and the cost of utilising assets is expensed (depreciated) over their useful lives. Items of property, plant and equipment and infrastructure costing less than \$5,000 are immediately expensed direct to the Statement of Comprehensive Income (other than where they form part of a group of similar items which are significant in total).

### **Initial recognition and measurement**

Property, plant and equipment and infrastructure are initially recognised at cost.

For items of property, plant and equipment and infrastructure acquired at no cost or for nominal cost, the cost is the fair value at the date of acquisition.

### **Subsequent measurement**

Property, plant and equipment are stated at historical cost less accumulated depreciation and accumulated impairment losses.

### **Depreciation**

All non-current assets having a limited useful life are systematically depreciated over their estimated useful lives in a manner that reflects the consumption of their future economic benefits.

Depreciation is calculated using the straight line method, using rates which are reviewed annually. Estimated useful lives for each class of depreciable asset are:

Motor Vehicles	5 years
Furniture, Fixture and Fittings	5 to 20 years
Office Equipment	5 to 20 years
Computer Equipment	3 years

## **(f) Intangible assets**

### **Capitalisation/Expensing of assets**

Acquisitions of intangible assets costing \$5,000 or more are capitalised. The cost of utilising the assets is expensed (amortised) over their useful life. Costs incurred below these thresholds are immediately expensed directly to the Statement of Comprehensive Income.

Intangible assets are stated at historical cost less accumulated depreciation and accumulated impairment losses.

Amortisation for intangible assets with finite useful lives is calculated for the period of the expected benefit (estimated useful life which is reviewed annually) on the straight line basis. All intangibles assets controlled by the Authority have a finite useful life and zero residual value.

The expected useful lives of intangible assets are:

Software	3 to 5 years
----------	--------------

Software that is not integral to the operation of any related hardware.

## **(g) Impairment of Assets**

Property, plant and equipment are tested for any indication of impairment at the end of each reporting period. Where there is an indication of impairment, the recoverable amount is estimated. Where the recoverable amount is less than the carrying amount, the asset is considered impaired and is written down to the recoverable amount and an impairment loss is recognised. As the Authority is a not-for-profit entity, unless an asset has been identified as a surplus asset, the recoverable amount is the higher of an asset's fair value less costs to sell and depreciated replacement cost.

The risk of impairment is generally limited to circumstances where an asset's depreciation is materially understated, where the replacement cost is falling or where there is a significant change in useful life. Each relevant class of assets is reviewed annually to verify that the accumulated depreciation/ amortisation reflects the level of consumption or expiration of the asset's future economic benefits and to evaluate any impairment risk from falling replacement costs.



Intangible assets with an indefinite useful life and intangible assets not yet available for use are tested for impairment at the end of the reporting period irrespective of whether there is any indication of impairment.

The recoverable amount of assets identified as surplus assets is the higher of fair value less costs to sell and the present value of future cash flows expected to be derived from the asset. Surplus assets carried at fair value have no risk of material impairment where fair value is determined by reference to market-based evidence. Where fair value is determined by reference to depreciated replacement cost, surplus assets are at risk of impairment and the recoverable amount is measured. Surplus assets at cost are tested for indications of impairment at the end of each reporting .

#### **(h) Leases**

The Authority has entered into an operating lease arrangement for the rent of the office building and motor vehicles where the lessor effectively retains all of the risks and benefits incident to ownership of the items held under the operating leases. Operating leases are expensed on a straight line basis over the lease term as this represents the pattern of benefits derived from the leased properties.

#### **(i) Financial Instruments**

In addition to cash , the Authority has two categories of financial instrument:

- Loans and receivables; and
- Financial liabilities measured at amortised cost.

Financial instruments have been disaggregated into the following classes:

##### **Financial Assets**

- Cash and cash equivalents
- Restricted cash and cash equivalents
- Receivables

##### **Financial Liabilities**

- Payables

Initial recognition and measurement of financial instruments is at fair value which normally equates to the transaction cost or the face value. Subsequent measurement is at amortised cost using the effective interest method.

The fair value of short-term receivables and payables is the transaction cost or the face value because there is no interest rate applicable and subsequent measurement is not required as the effect of discounting is not material.

#### **(j) Cash and Cash Equivalents**

For the purpose of the Statement of Cash Flows, cash and cash equivalent (and restricted cash and cash equivalent) assets comprise cash on hand and short-term deposits with original maturities of three months or less that are readily convertible to a known amount of cash and which are subject to insignificant risk of changes in value, and bank overdrafts.

**(k) Accrued Salaries**

Accrued salaries (see Note 23) represent the amount due to staff but unpaid at the end of the financial year. Accrued salaries are settled within a fortnight of the financial year end. The Authority considers the carrying amount of accrued salaries to be equivalent to its net fair value.

**(l) Receivables**

Receivables are recognised at original invoice amount less an allowance for any uncollectible amounts (i.e. impairment). The collectability of receivables is reviewed on an ongoing basis and any receivables identified as uncollectible are written-off against the allowance account. The allowance for uncollectible amounts (doubtful debts) is raised when there is objective evidence that the Authority will not be able to collect the debts. The carrying amount is equivalent to fair value as it is due for settlement within 30 days.

**(m) Payables**

Payables are recognised when the Authority becomes obliged to make future payments as a result of a purchase of assets or services. The carrying amount is equivalent to fair value, as settlement is generally within 30 days.

**(n) Provisions**

Provisions are liabilities of uncertain timing or amount and are recognised where there is a present legal or constructive obligation as a result of a past event and when the outflow of resources embodying economic benefits is probable and a reliable estimate can be made of the amount of the obligation. Provisions are reviewed at the end of each reporting period.

**Provisions - Employee Benefits**

All annual leave and long service leave provisions are in respect of employees' services up to the end of the reporting period.

**Annual leave**

The liability for annual leave expected to be settled within 12 months after the end of the reporting period is recognised and measured at the undiscounted amounts expected to be paid when the liability is settled.

Annual leave that is not expected to be settled within 12 months after the end of the reporting period is recognised and measured at the present value of amounts expected to be paid when the liabilities are settled using the remuneration rate expected to apply at the time of settlement.

When assessing expected future payments consideration is given to expected future wage and salary levels including non-salary components such as employer superannuation contributions, as well as the experience of employee departures and periods of service. The expected future payments are discounted using market yields at the end of the reporting period on national government bonds with terms to maturity that match, as closely as possible, the estimated future cash outflows.

The provision for annual leave is classified as a current liability as the Authority does not have an unconditional right to defer settlement of the liability for at least 12 months after the end of the reporting period.

## **Long service leave**

The liability for long service leave expected to be settled within 12 months after the end of the reporting period is recognised and measured at the undiscounted amounts expected to be paid when the liability is settled.

Long service leave that is not expected to be settled within 12 months after the end of the reporting period is recognised and measured at the present value of amounts expected to be paid when the liabilities are settled using the remuneration rate expected to apply at the time of settlement. When assessing expected future payments consideration is given to expected future wage and salary levels including non-salary components such as employer superannuation contributions, as well as the experience of employee departures and periods of service. The expected future payments are discounted using market yields at the end of the reporting period on national government bonds with terms to maturity that match, as closely as possible, the estimated future cash outflows.

Unconditional long service leave provisions are classified as current liabilities as the Authority does not have an unconditional right to defer settlement of the liability for at least 12 months after the end of the reporting period. Pre-conditional and conditional long service leave provisions are classified as non-current liabilities because the Authority has an unconditional right to defer the settlement of the liability until the employee has completed the requisite years of service.

## **Superannuation**

The Government Employees Superannuation Board (GESB) and other funds administer public sector superannuation arrangements in Western Australia in accordance with legislative requirements.

Eligibility criteria for membership in particular schemes for public sector employees varies according to commencement and implementation dates. Eligible employees contribute to the Pension Scheme, a defined benefit pension scheme closed to new members since 1987, or the Gold State Superannuation Scheme (GSS), a defined benefit lump sum scheme closed to new members since 1995.

The GSS is a defined benefit scheme for the purposes of employees and whole-of-government reporting. However, it is a defined contribution plan for agency purposes because the concurrent contributions (defined contributions) made by the Authority to GESB extinguishes the agency's obligations to the related superannuation liability.

The Authority has no liabilities under the Pension Scheme or the GSS. The liabilities for the unfunded Pension Scheme and the unfunded GSS transfer benefits attributable to members who transferred from the Pension Scheme, are assumed by the Treasurer. All other GSS obligations are funded by concurrent contributions made by the Authority to the GESB.

Employees commencing employment prior to 16 April 2007 who were not members of either the Pension Scheme or the GSS became non-contributory members of the West State Superannuation Scheme (WSS). Employees commencing employment on or after 16 April 2007 became members of the GESB Super Scheme (GESBS). From 30 March 2012, existing members of the WSS or GESBS and new employees became able to choose their preferred superannuation fund. The Authority makes concurrent contributions to GESB or other funds on behalf of employees in compliance with the Commonwealth Government's Superannuation Guarantee (Administration) Act 1992. Contributions to these accumulation schemes extinguish the Authority's liability for superannuation charges in respect of employees who are not members of the Pension Scheme or GSS.

## **Provisions - Other**

### **Employment On-Costs**

Employment on-costs, including workers' compensation insurance, are not employee benefits and are recognised separately as liabilities and expenses when the employment to which they relate has occurred. Employment on-costs are included as part of 'Other expenses' and are not included as part of the Authority's 'Employee benefits expense'. The related liability is included in 'Employment on-costs provision'.

#### **(o) Superannuation expense**

The superannuation expense in the Statement of Comprehensive Income comprises employer contributions paid to the GSS (concurrent contributions), WSS, the GESBS, or other superannuation fund.

#### **(p) Comparative Figures**

Comparative figures are, where appropriate, reclassified to be comparable with the figures presented in the current financial year.

### **3 Judgements made by management in applying accounting policies**

The preparation of financial statements requires management to make judgements about the application of accounting policies that have a significant effect on the amounts recognised in the financial statements. The Authority evaluates these judgements regularly.

#### **Operating Lease Commitments**

The Authority has entered into a commercial lease and has determined that the lessor retains all the significant risks and rewards of ownership of the property. Accordingly, the lease has been classified as an operating lease.

### **4 Key sources of estimation uncertainty**

Key estimates and assumptions concerning the future are based on historical experience and various other factors that have a significant risk of causing a material adjustment to the carrying amount of assets and liabilities within the next financial year.

#### **Long Service Leave**

Several estimations and assumptions used in calculating the Authority's long service leave provision include expected future salary rates, discount rates, employee retention rates and expected future payments. Changes in these estimations and assumptions may impact on the carrying amount of the long service leave provision.

### **5 Disclosure of changes in accounting policy and estimates**

#### **Initial application of an Australian Accounting Standard**

The Authority has applied the following Australian Accounting Standards effective for annual reporting periods beginning on or after 1 July 2011 that impacted on the Authority.

AASB 1054	<p>Australian Additional Disclosures</p> <p>This Standard, in conjunction with AASB 2011-1 Amendments to Australian Accounting Standards arising from the Trans-Tasman Convergence Project, removes disclosure requirements from other Standards and incorporates them in a single Standard to achieve convergence between Australian and New Zealand Accounting Standards. There is no financial impact.</p>
AASB 2009-12	<p>Amendments to Australian Accounting Standards [AASB 5, 8, 108, 110, 112, 119, 133, 137, 139, 1023 &amp; 1031 and Int 2, 4, 16, 1039 &amp; 1052]</p> <p>This Standard makes editorial amendments to a range of Australian Accounting Standards and Interpretations. There is no financial impact.</p>
AASB 2010-4	<p>Further Amendments to Australian Accounting Standards arising from the Annual Improvements Project [AASB 1, 7, 101 &amp; 134 and Int 13]</p> <p>The amendments to AASB 7 clarify financial instrument disclosures in relation to credit risk. The carrying amount of financial assets that would otherwise be past due or impaired whose terms have been renegotiated is no longer required to be disclosed. There is no financial impact. The amendments to AASB 101 clarify the presentation of the Statement of Changes in Equity. The disaggregation of other comprehensive income reconciling the carrying amount at the beginning and the end of the period for each component of equity can be presented in either the Statement of Changes in Equity or the Notes.</p>
AASB 2010-5	<p>Amendments to Australian Accounting Standards [AASB 1, 3, 4, 5, 101, 107, 112, 118, 119, 121, 132, 133, 134, 137, 139, 140, 1023 &amp; 1038 and Int 112, 115, 127, 132 &amp; 1042]</p> <p>This Standard makes editorial amendments to a range of Australian Accounting Standards and Interpretations. There is no financial impact.</p>
AASB 2010-6	<p>Amendments to Australian Accounting Standards – Disclosures on Transfers of Financial Assets [AASB 1 &amp; 7]</p> <p>This Standard introduces additional disclosures relating to transfers of financial assets in AASB 7. An entity shall disclose all transferred financial assets that are not derecognised and any continuing involvement in a transferred asset, existing at the reporting date, irrespective of when the related transfer transaction occurred. There is no financial impact.</p>
AASB 2011-1	<p>Amendments to Australian Accounting Standards arising from the Trans-Tasman Convergence Project [AASB 1, 5, 101, 107, 108, 121, 128, 132 &amp; 134 and Int 2, 112 &amp; 113]</p> <p>This Standard, in conjunction with AASB 1054, removes disclosure requirements from other Standards and incorporates them in a single Standard to achieve convergence between Australian and New Zealand Accounting Standards. There is no financial impact.</p>
AASB 2011-5	<p>Amendments to Australian Accounting Standards – Extending Relief from Consolidation, the Equity Method and Proportionate Consolidation [AASB 127, 128 &amp; 131]</p> <p>This Standard extends the relief from consolidation, the equity method and proportionate consolidation by removing the requirement for the consolidated financial statements prepared by the ultimate or any intermediate parent entity to be IFRS compliant, provided that the parent entity, investor or venturer and the ultimate or intermediate parent entity are not-for-profit non-reporting entities that comply with Australian Accounting Standards. There is no financial impact.</p>

### Future impact of Australian Accounting Standards not yet operative

The Authority cannot early adopt an Australian Accounting Standard unless specifically permitted by TI 1101 Application of Australian Accounting Standards and Other Pronouncements. Consequently, the Authority has not applied early any of the following Australian Accounting Standards that have been issued that may impact the Authority. Where applicable, the Authority plans to apply these Australian Accounting Standards from their application date.

		Operative for reporting periods beginning on/after
AASB 9	<p>Financial Instruments</p> <p>This Standard supersedes AASB 139 Financial Instruments: Recognition and Measurement, introducing a number of changes to accounting treatments.</p> <p>The Standard was reissued in December 2010. The Authority has not yet determined the application or the potential impact of the Standard. uthority plans to apply these Australian Accounting Standards from their application date.</p>	1-Jan-13
AASB 10	<p>Consolidated Financial Statements</p> <p>This Standard supersedes requirements under AASB 127 Consolidated and Separate Financial Statements and Int 112 Consolidation – Special Purpose Entities, introducing a number of changes to accounting treatments.</p> <p>The Standard was issued in August 2011. The Authority has not yet determined the application or the potential impact of the Standard.</p>	1-Jan-13
AASB 11	<p>Joint Arrangements</p> <p>This Standard supersedes AASB 131 Interests in Joint Ventures, introducing a number of changes to accounting treatments.</p> <p>The Standard was issued in August 2011. The Authority has not yet determined the application or the potential impact of the Standard.</p>	1-Jan-13
AASB 12	<p>Disclosure of Interests in Other Entities</p> <p>This Standard supersedes disclosure requirements under AASB 127 Consolidated and Separate Financial Statements, AASB 128 Investments in Associates and AASB 131 Interests in Joint Ventures.</p> <p>The Standard was issued in August 2011. The Authority has not yet determined the application or the potential impact of the Standard.</p>	1-Jan-13



AASB 13	Fair Value Measurement	1-Jan-13
	This Standard defines fair value, sets out a framework for measuring fair value and requires disclosures about fair value measurements. There is no financial impact.	
AASB 119	Employee Benefits	1-Jan-13
	This Standard supersedes AASB 119 (October 2010). As the Authority does not operate a defined benefit plan, the impact of the change is limited to measuring annual leave as a long-term employee benefit. The resultant discounting of the annual leave benefit has an immaterial impact.	
AASB 127	Separate Financial Statements	1-Jan-13
	This Standard supersedes requirements under AASB 127 Consolidated and Separate Financial Statements, introducing a number of changes to accounting treatments.	
	The Standard was issued in August 2011. The Authority has not yet determined the application or the potential impact of the Standard.	
AASB 128	Investments in Associates and Joint Ventures	1-Jan-13
	This Standard supersedes AASB 128 Investments in Associates, introducing a number of changes to accounting treatments.	
	The Standard was issued in August 2011. The Authority has not yet determined the application or the potential impact of the Standard.	
AASB 1053	Application of Tiers of Australian Accounting Standards	1-Jul-13
	This Standard establishes a differential financial reporting framework consisting of two tiers of reporting requirements for preparing general purpose financial statements. There is no financial impact.	
AASB 2009-11	Amendments to Australian Accounting Standards arising from AASB 9 [AASB 1, 3, 4, 5, 7, 101, 102, 108, 112, 118, 121, 127, 128, 131, 132, 136, 139, 1023 & 1038 and Int 10 & 12]  [Modified by AASB 2010-7]	1-Jul-13

AASB 13	<p>Fair Value Measurement</p> <p>This Standard defines fair value, sets out a framework for measuring fair value and requires disclosures about fair value measurements. There is no financial impact.</p>	1-Jan-13
AASB 2010-2	<p>Amendments to Australian Accounting Standards arising from Reduced Disclosure Requirements [AASB 1, 2, 3, 5, 7, 8, 101, 102, 107, 108, 110, 111, 112, 116, 117, 119, 121, 123, 124, 127, 128, 131, 133, 134, 136, 137, 138, 140, 141, 1050 &amp; 1052 and Int 2, 4, 5, 15, 17, 127, 129 &amp; 1052]</p> <p>This Standard makes amendments to Australian Accounting Standards and Interpretations to introduce reduced disclosure requirements for certain types of entities. There is no financial impact.</p>	1-Jul-13
AASB 2010-7	<p>Amendments to Australian Accounting Standards arising from AASB 9 (December 2010) [AASB 1, 3, 4, 5, 7, 101, 102, 108, 112, 118, 120, 121, 127, 128, 131, 132, 136, 137, 139, 1023 &amp; 1038 and Int 2, 5, 10, 12, 19 &amp; 127]</p> <p>This Standard makes consequential amendments to other Australian Accounting Standards and Interpretations as a result of issuing AASB 9 in December 2010. The Authority has not yet determined the application or the potential impact of the Standard.</p>	1-Jan-13
AASB 2011-2	<p>Amendments to Australian Accounting Standards arising from the Trans-Tasman Convergence Project – Reduced Disclosure Requirements [AASB 101 &amp; 1054]</p> <p>This Standard removes disclosure requirements from other Standards and incorporates them in a single Standard to achieve convergence between Australian and New Zealand Accounting Standards for reduced disclosure reporting. There is no financial impact.</p>	1-Jul-13
AASB 2011-6	<p>Amendments to Australian Accounting Standards – Extending Relief from Consolidation, the Equity Method and Proportionate Consolidation – Reduced Disclosure Requirements [AASB 127, 128 &amp; 131]</p> <p>This Standard extends the relief from consolidation, the equity method and proportionate consolidation by removing the requirement for the consolidated financial statements prepared by the ultimate or any intermediate parent entity to be IFRS compliant, provided that the parent entity, investor or venturer and the ultimate or intermediate parent entity comply with Australian Accounting Standards or Australian</p>	1-Jul-13

AASB 13	<p>Fair Value Measurement</p> <p>This Standard defines fair value, sets out a framework for measuring fair value and requires disclosures about fair value measurements. There is no financial impact.</p>	1-Jan-13
AASB 2010-2	<p>Amendments to Australian Accounting Standards arising from Reduced Disclosure Requirements [AASB 1, 2, 3, 5, 7, 8, 101, 102, 107, 108, 110, 111, 112, 116, 117, 119, 121, 123, 124, 127, 128, 131, 133, 134, 136, 137, 138, 140, 141, 1050 &amp; 1052 and Int 2, 4, 5, 15, 17, 127, 129 &amp; 1052]</p> <p>This Standard makes amendments to Australian Accounting Standards and Interpretations to introduce reduced disclosure requirements for certain types of entities. There is no financial impact.</p>	1-Jul-13
AASB 2010-7	<p>Amendments to Australian Accounting Standards arising from AASB 9 (December 2010) [AASB 1, 3, 4, 5, 7, 101, 102, 108, 112, 118, 120, 121, 127, 128, 131, 132, 136, 137, 139, 1023 &amp; 1038 and Int 2, 5, 10, 12, 19 &amp; 127]</p> <p>This Standard makes consequential amendments to other Australian Accounting Standards and Interpretations as a result of issuing AASB 9 in December 2010. The Authority has not yet determined the application or the potential impact of the Standard.</p>	1-Jan-13
AASB 2011-2	<p>Amendments to Australian Accounting Standards arising from the Trans-Tasman Convergence Project – Reduced Disclosure Requirements [AASB 101 &amp; 1054]</p> <p>This Standard removes disclosure requirements from other Standards and incorporates them in a single Standard to achieve convergence between Australian and New Zealand Accounting Standards for reduced disclosure reporting. There is no financial impact.</p>	1-Jul-13
AASB 2011-6	<p>Amendments to Australian Accounting Standards – Extending Relief from Consolidation, the Equity Method and Proportionate Consolidation – Reduced Disclosure Requirements [AASB 127, 128 &amp; 131]</p> <p>This Standard extends the relief from consolidation, the equity method and proportionate consolidation by removing the requirement for the consolidated financial statements prepared by the ultimate or any intermediate parent entity to be IFRS compliant, provided that the parent entity, investor or venturer and the ultimate or intermediate parent entity comply with Australian Accounting Standards or Australian Accounting Standards – Reduced Disclosure Requirements. There is no financial impact.</p>	1-Jul-13

AASB 2011-7	<p>Amendments to Australian Accounting Standards arising from the Consolidation and Joint Arrangements Standards [AASB 1, 2, 3, 5, 7, 9, 2009-11, 101, 107, 112, 118, 121, 124, 132, 133, 136, 138, 139, 1023 &amp; 1038 and Int 5, 9, 16 &amp; 17]</p> <p>This Standard gives effect to consequential changes arising from the issuance of AASB 10, AASB 11, AASB 127 Separate Financial Statements and AASB 128 Investments in Associates and Joint Ventures. The Authority has not yet determined the application or the potential impact of the Standard.</p>	1-Jan-13
AASB 2011-8	<p>Amendments to Australian Accounting Standards arising from AASB 13 [AASB 1, 2, 3, 4, 5, 7, 9, 2009-11, 2010-7, 101, 102, 108, 110, 116, 117, 118, 119, 120, 121, 128, 131, 132, 133, 134, 136, 138, 139, 140, 141, 1004, 1023 &amp; 1038 and Int 2, 4, 12, 13, 14, 17, 19, 131 &amp; 132]</p> <p>This Standard replaces the existing definition and fair value guidance in other Australian Accounting Standards and Interpretations as the result of issuing AASB 13 in September 2011. There is no financial impact.</p>	1-Jan-13
AASB 2011-9	<p>Amendments to Australian Accounting Standards – Presentation of Items of Other Comprehensive Income [AASB 1, 5, 7, 101, 112, 120, 121, 132, 133, 134, 1039 &amp; 1049]</p> <p>This Standard requires to group items presented in other comprehensive income on the basis of whether they are potentially reclassifiable to profit or loss subsequently (reclassification adjustments). The Authority has not yet determined the application or the potential impact of the Standard</p>	1-Jul-12
AASB 2011-10	<p>Amendments to Australian Accounting Standards arising from AASB 119 (September 2011) [AASB 1, 8, 101, 124, 134, 1049 &amp; 2011-8 and Int 14]</p> <p>This Standard makes amendments to other Australian Accounting Standards and Interpretations as a result of issuing AASB 119 in September 2011. There is no financial impact.</p>	1-Jan-13

AASB 2011-11	<p>Amendments to AASB 119 (September 2011) arising from Reduced Disclosure Requirements</p> <p>This Standard gives effect to Australian Accounting Standards – Reduced Disclosure Requirements for AASB 119 (September 2011).</p> <p>There is no financial impact.</p>	1-Jul-13
AASB 2012-1	<p>Amendments to Australian Accounting Standards - Fair Value Measurement - Reduced Disclosure Requirements [AASB 3, 7, 13, 140 &amp; 141]</p> <p>This Standard establishes and amends reduced disclosure requirements for additional and amended disclosures arising from AASB 13 and the consequential amendments implemented through AASB 2011-8.</p> <p>There is no financial impact.</p>	1-Jul-13

Western Australian Health Promotion Foundation  
Notes To The Financial Statements  
For The Year Ended

30 June 2012

	\$	\$
<b>6 Employee benefits expense</b>		
Wages and salaries (a)	1,672,516	1,427,313
Superannuation – defined contribution plans(b)	156,845	138,925
	<b>1,829,361</b>	<b>1,566,238</b>
(a) Includes the value of the fringe benefit to the employee plus the fringe benefits tax component, leave entitlements including superannuation contribution component.		
(b) Defined contribution plans include West State, Gold State and GESB Super Scheme (contribution paid).		
Employment on-costs such as workers' compensation insurance are included at note 11 'Other Expenses'.		
The employment on-costs liability is included at note 21 'Provisions'.		
<b>7 Supplies and services</b>		
Communications	53,331	44,099
Consultants and contractors	918,845	510,111
Consumables	92,407	75,752
Travel	24,028	31,013
Other	88,879	75,276
	<b>1,177,490</b>	<b>736,251</b>
<b>8 Depreciation and amortisation expense</b>		
<u>Depreciation</u>		
Equipment and apparatus	8,894	7,888
Computing equipment and software	22,980	33,305
	<b>31,874</b>	<b>41,193</b>
<u>Amortisation</u>		
Intangible assets	14,454	-
	<b>14,454</b>	<b>-</b>
Total depreciation and amortisation	<b>46,328</b>	<b>41,193</b>
<b>9 Accommodation expenses</b>		
Lease rentals	351,553	323,569
Cleaning	67,894	57,248
	<b>419,447</b>	<b>380,817</b>



**10 Grants and sponsorships**

Health promotion and research grants	5,935,172	7,290,695
Arts sponsorships	3,138,842	3,074,767
Sport sponsorships	6,239,644	5,969,172
Racing sponsorships	689,950	839,500
Support sponsorships	1,655,700	711,621
Evaluations	430,000	385,000
	<b>18,089,308</b>	<b>18,270,755</b>

**11 Other expenses**

Employment on-costs (a)	30,457	29,146
Maintenance	10,567	15,170
	<b>41,024</b>	<b>44,316</b>

(a) Includes workers' compensation insurance and other employment on-costs. The on-costs liability associated with the recognition of annual and long service leave liability is included at note 21 'Provisions'. Superannuation contributions accrued as part of the provision for leave are employee benefits and are not included in employment on-costs.

**12 Interest revenue**

Bank Interest	908,079	910,258
	<b>908,079</b>	<b>910,258</b>

**13 Other revenue**

Return of unexpended grants and sponsorships	193,859	79,471
Other	45,390	479,739
	<b>239,249</b>	<b>559,210</b>

**14 Income from State Government**

Appropriation received during the year:		
Service appropriation (a)	20,674,000	20,087,000
	<b>20,674,000</b>	<b>20,087,000</b>

(a) Service appropriations fund the net cost of services delivered. The appropriation revenue comprises a cash component only.

**15 Cash and cash equivalents**

Held at Treasury - WA Health Promotion Fund	8,389,123	9,307,995
Cash on Hand	270	87
	<b>8,389,393</b>	<b>9,308,082</b>

## 16 Receivables

Current		
GST receivable	807,415	959,583
Interest receivable	126,970	158,798
Other Debtors	33,000	-
	<b>967,385</b>	<b>1,118,381</b>

## 17 Other assets

Prepayments	45,055	39,508
	<b>45,055</b>	<b>39,508</b>

## 18 Property, plant and equipment

### Motor Vehicles

At Cost	20,382	20,382
Accumulated depreciation	(20,382)	(20,382)
	-	-

### Equipment and Apparatus

At Cost	45,418	39,731
Accumulated depreciation	(19,457)	(10,563)
	<b>25,961</b>	<b>29,168</b>

### Computing Equipment and Software

At Cost	236,152	253,148
Accumulated depreciation	(218,186)	(195,206)
	<b>17,966</b>	<b>57,942</b>

	<b>43,927</b>	<b>87,110</b>
--	---------------	---------------

Reconciliations of the carrying amounts of property, plant, and equipment at the beginning and end of the reporting period are set out in the table below.

	Motor Vehicles	Equipment and Apparatus	Computing Equipment	Total
2012	\$	\$	\$	\$
Carrying amount at the start of the year	-	29,168	57,942	87,110
Additions	-	5,687	6,816	12,503
Transfers (a)	-	-	(23,812)	(23,812)
Depreciation	-	(8,894)	(22,980)	(31,874)
	-			
Carrying amount at the end of the year	-	25,961	17,966	43,927

(a) Previous years work in progress of \$23,812 was transferred to Intangible Assets.

There were no indications of impairment to property, plant and equipment at 30 June 2012.

2011	Motor Vehicles \$	Equipment and Apparatus \$	Computing Equipment \$	Total \$
Carrying amount at the start of the year	-	21,120	48,174	69,294
Additions (i)	-	15,936	43,073	59,009
Disposals	-	-	-	-
Depreciation	-	(7,888)	(33,305)	(41,193)
Carrying amount at the end of the year	-	29,168	57,942	87,110

- (i) Additions to computing equipment includes work in progress of \$23,812 which is not subject to depreciation.

## 19 Intangible Assets

### Computers software

At cost	86,723	-
Accumulated amortisation	(14,454)	-
	<b>72,269</b>	<b>-</b>

### Reconciliation

### Computers software

Carrying amount at start of period	-	-
Additions	62,911	-
Transfers	23,812	-
Amortisation expense	(14,454)	-
Carrying amount at end of period	<b>72,269</b>	<b>-</b>

## 20 Payables

Current		
Trade payables	49,492	46,861
Grants and sponsorships	6,714,795	7,992,114
	<b>6,764,287</b>	<b>8,038,975</b>

## 21 Provisions

### Current

#### Employee benefits provision

##### Annual Leave (a)

##### Long service leave (b)

114,443

91,366

100,816

126,008

### Other provisions

#### Employment on-costs (c)

19,133

20,537

**234,392**

**237,911**

### Non-current

#### Employee benefits provision

##### Long service leave (b)

172,694

138,256

### Other provisions

#### Employment on-costs (c)

18,559

13,691

**191,253**

**151,947**

### (a) Annual leave liability

Annual leave liabilities have been classified as current as there is no unconditional right to defer settlement for at least 12 months after the end of the reporting period. Assessments indicate that actual settlement of the liabilities is expected to occur as follows:

#### Within 12 months of the end of the reporting period

80,720

72,921

#### More than 12 months after the reporting period

33,723

18,446

**114,443**

**91,366**

### (b) Long service leave liability

Long service leave liabilities have been classified as current where there is no unconditional right to defer settlement for at least 12 months after the end of the reporting period. Assessments indicate that actual settlement of the liabilities is expected to occur as follows:

#### Within 12 months of the end of the reporting period

21,200

23,245

#### More than 12 months after the reporting period

252,310

241,019

**273,510**

**264,264**

### (c) Employment on-costs

#### Movements in Other Provisions

Movements in each class of provisions during the financial year, other than employee benefits, are set out below.

#### Employment on-cost provisions

##### Carrying amount at the start of period

34,228

27,344

##### Additional provision recognised

3,464

6,884

##### Carrying amount at end of period

**37,692**

**34,228**

The settlement of annual and long service leave liabilities gives rise to the payment of employment on-costs including workers' compensation insurance. The provision is the present value of expected future payments. The associated expense is disclosed in note 11 'Other expenses'.

## 22 Other current liabilities

Current		
Accrued salaries	64,300	37,220
Amount owing to the ATO	9,016	5,121
Other	24,901	70,397
	<b>98,217</b>	<b>112,738</b>

## 23 Equity

Equity represents the residual interest in the net assets of Healthway. The Government holds the equity interest in Healthway on behalf of the community.

### Accumulated surplus

Balance at start of period	2,011,510	1,494,612
Result for the period	218,370	516,898
Balance at end of period	<b>2,229,880</b>	<b>2,011,510</b>

## 24 Notes to the Statement of Cash Flows

### Reconciliation of cash

Cash at the end of the financial year as shown in the Statement of Cash Flows is reconciled to the related items in the Statement of Financial Position as follows:

Cash and cash equivalents	8,389,123	9,307,995
Cash on hand	270	87
	<b>8,389,393</b>	<b>9,308,082</b>

Reconciliation of net cost of services to net cash flows provided by/(used in) operating activities

Net cost of services	(20,455,630)	(19,570,102)
Non-cash items:		
Depreciation and Amortisation	46,328	41,193
(Gain)/Loss on Disposal of Assets		-
(Increase)/decrease in assets:		
Current receivables	(1,172)	(36,298)
Other current assets	(5,547)	(33,149)

Increase/(decrease) in liabilities:		
Current payables	(1,274,688)	726,508
Current provisions	(3,519)	(6,729)
Other current liabilities	(14,521)	84,927
Non-current provisions	39,306	41,449
Net GST receipts/(payments)	32,783	(149,750)
Change in GST in receivables/payables	119,385	(64,958)
Net cash used in operating activities	<b>(21,517,275)</b>	<b>(18,966,909)</b>

At the end of the reporting period, the Authority had fully drawn on all financing facilities, details of which are disclosed in the financial statements.

## 25 Commitments

### (a) Grants expenditure commitments

Grant expenditure commitments relate to the Board's approval to fund applications which were received on or prior to 30 June 2012 and are contingent on Healthway's continued existence and future revenue being received. The balance is not recognised as a liability until the year payment is to be made. The amounts payable are as follows:

Within 1 year	8,979,504	8,979,138
Later than 1 year and not later than 5 years	4,727,311	4,705,769
	<b>13,706,815</b>	<b>13,684,907</b>

### (b) Non-cancellable operating lease commitments

Commitments for minimum lease payments are payable as follows:

Within 1 year	383,288	361,750
Later than 1 year and not later than 5 years	1,506,403	1,432,377
Later than 5 years	928,130	1,284,193
	<b>2,817,821</b>	<b>3,078,319</b>

Healthway relocated premises in February 2010 and a new non-cancellable lease was established with rent payable monthly in advance. The current lease concludes 31 October 2019 with two, three year options.

## 26 Contingent liabilities and contingent assets

There were no known contingent liabilities and contingent assets at reporting date and at the date of signing the financial report.

## 27 Events occurring after the end of the reporting period

No events, matters or circumstances have arisen since the end of the reporting period which significantly affected or may significantly affect the operations of the Authority, the results of those operations, or the state of affairs of the Authority in future financial years.

## 28 Explanatory statement

### (a) Significant variations between estimated and actual results for 2012

Significant variations are considered to be those greater than 10% and \$25,000.

	2012 Budget	2012 Actual	Variance
Expenses			
Supplies and services	827,000	1,177,490	(350,490)
During 2011-12 functions formally outsourced were returned in-house and salaries and other on-costs were reflected in Corporate Service.			
Revenues			
Other revenues	-	239,249	(239,249)

The actual \$239,249 mainly reflects unexpended funds returned by sponsorship and grant recipients.

### (b) Significant variations between actual results for 2011 and 2012

Significant variations are considered to be those greater than 10% and \$25,000.

	2012 Actual \$	2011 Actual \$	Variance \$
Expenses			
Employee benefits expense	1,829,361	1,566,238	263,123
Supplies and services	1,177,490	736,251	441,239
Employee costs variation mainly reflects the impact of a new senior position and payouts of maternity leave.			
During 2011-12 functions formally outsourced were returned in-house and salaries and other on-costs were reflected in Corporate Service.			
Revenues			
Other revenue	239,249	559,210	(319,961)

The variance in other revenue mainly reflects unexpended funds returned by sponsorship and grant recipients.



## **29 Financial Instruments**

### **(a) Financial Risk Management Objectives and Policies**

Financial instruments held by the Authority are cash and cash equivalents, restricted cash and cash equivalents, loans and receivables, payables, bank overdraft, WATC/Bank borrowings, finance leases, and Treasurer's advances. The Authority has limited exposure to financial risks.

#### **Credit risk**

Credit risk arises when there is the possibility of the Authority's receivables defaulting on their contractual obligations resulting in financial loss to the Authority.

The maximum exposure to credit risk at the end of the reporting period in relation to each class of recognised financial assets is the gross carrying amount of those assets inclusive of any allowance for impairment as shown in the table at Note 29(c) 'Financial Instruments Disclosures' and Note 16 'Receivables'.

Credit risk associated with the Authority's financial assets is minimal because the main receivable is the amounts receivable for services (holding account). For receivables other than government, the Authority trades only with recognised, creditworthy third parties. The Authority has policies in place to ensure that sales of products and services are made to customers with an appropriate credit history. In addition, receivable balances are monitored on an ongoing basis with the result that the Authority's exposure to bad debts is minimal. At the end of the reporting period there were no significant concentrations of credit risk.

#### **Liquidity risk**

Liquidity risk arises when the Authority is unable to meet its financial obligations as they fall due. The Authority is exposed to liquidity risk through its trading in the normal course of business. The Authority has appropriate procedures to manage cash flows including drawdowns of appropriations by monitoring forecast cash flows to ensure that sufficient funds are available to meet its commitments.

#### **Market risk**

The Authority's exposure to market risk for changes in interest rates relate primarily to cash investments. The Authority does not trade in foreign currency and is not materially exposed to other price risks.

**(b) Categories of Financial Instruments**

The carrying amounts of each of the following categories of financial assets and financial liabilities at the end of the reporting period are:

	2012	2011
<b>Financial Assets</b>		
Cash and cash equivalents	8,389,393	9,308,082
Loans and receivables (a)	159,970	158,798
<b>Financial Liabilities</b>		
Financial liabilities measured at amortised cost	6,862,504	8,151,713

(a) The amount of loans and receivables excludes GST recoverable from the ATO (statutory receivable).

**(c) Financial Instruments Disclosures**

Credit Risk

The following table disclose the Authority's maximum exposure to credit risk and the ageing analysis of financial assets. The Authority's maximum exposure to credit risk at the end of the reporting period is the carrying amount of financial assets as shown below. The table discloses the ageing of financial assets that are past due but not impaired and impaired financial assets. The table is based on information provided to senior management of the Authority.

The Authority does not hold any collateral as security or other credit enhancement relating to the financial assets it holds.

**Aged analysis of financial assets**

Past due but not impaired

	Carrying Amount	Not past due and not impaired	Past due but not Impaired	Up to 1 Month	1-3 Months	3 months to 1 year	1-5 years	More than 5 Years	Impaired financial assets
<b>2012</b>									
Cash and cash equivalents	8,389,393	8,389,393							
Receivables	159,970	159,970							
	8,549,363	8,549,363	-	-	-	-	-	-	-
<b>2011</b>									
Cash and cash equivalents	9,308,082	9,308,082							
Receivables	158,798	158,798							
	9,466,880	9,466,880	-	-	-	-	-	-	-

(a) The amount of receivables excludes GST recoverable from the ATO (statutory receivable).

### Liquidity risk and interest rate exposure

The following table details the Authority's interest rate exposure and the contractual maturity analysis of financial assets and financial liabilities. The maturity analysis section includes interest and principal cash flows. The interest rate exposure section analyses only the carrying amounts of each item.

### **Interest rate exposure and maturity analysis of financial assets and liabilities**

		Interest rate exposure					Maturity Dates				
	Weighted Average Effective Interest Rate	Carrying Amount	Fixed interest rate	Variable interest rate	Non-interest bearing	Nominal Amount	Up to 1 mth	1-3 mths	3 mths to 1 yr	1-5 yrs	More than 5 yrs
2012											
Financial Assets											
Cash and cash equivalents	4.745%	8,389,393		8,389,123	270	8,389,393					
Receivables		159,970			159,970	159,970					
		8,549,363	-	8,389,123	160,240	8,549,363	-	-	-	-	-
Financial Liabilities											
Payables		6,764,287			6,764,287	6,764,287					
Other liabilities		98,217			98,217	98,217					
		6,862,504	-	-	6,862,504	6,862,504	-	-	-	-	-

		Interest rate exposure					Maturity Dates				
	Weighted Average Effective Interest Rate	Carrying Amount	Fixed interest rate	Variable interest rate	Non-interest bearing	Nominal Amount	Up to 1 mth	1-3 mths	3 mths to 1 yr	1-5 yrs	More than 5 yrs
2011											
Financial Assets											
Cash and cash equivalents	5.031%	9,308,082		9,307,995	87	9,308,082					
Receivables		158,798			158,798	158,798					
		9,466,880	-	9,307,995	158,885	9,466,880	-	-	-	-	-
Financial Liabilities											
Payables		8,038,975			8,038,975	8,038,975					
Other liabilities		112,738			112,738	112,738					
		8,151,713	-	-	8,151,713	8,151,713	-	-	-	-	-

### Interest rate sensitivity analysis

The following table represents a summary of the interest rate sensitivity of the Authority's financial assets and liabilities at the end of the reporting period on the surplus for the period and equity for a 1% change in interest rates. It is assumed that the change in interest rates is held constant throughout the reporting period.

		-100 basis points		+100 basis points	
	Carrying amount	Profit \$	Equity \$	Profit \$	Equity \$
<b>2012</b>					
<u>Financial Assets</u>					
Cash and cash equivalents	8,389,123	(83,891)	(83,891)	83,891	83,891
		(83,891)	(83,891)	83,891	83,891
<b>2011</b>					
<u>Financial Assets</u>					
Cash and cash equivalents	9,307,995	(93,080)	(93,080)	93,080	93,080
		(93,080)	(93,080)	93,080	93,080

### Fair Values

All financial assets and liabilities recognised in the Statement of Financial Position, whether they are carried at cost or fair value, are recognised at amounts that represent a reasonable approximation of fair value unless otherwise stated in the applicable notes.

### 30 Remuneration of members of the Accountable Authority and senior officers

#### Remuneration of Members of the Accountable Authority

The number of members of the accountable authority whose total of fees, salaries, superannuation, non-monetary benefits and other benefits for the financial year, falls within the following bands are:

	2012	2011
\$0 - \$10,000	12	11
\$20,001 - \$30,000	1	1
The total remuneration of members of the accountable authority		
		53,289
		65,465

The total remuneration includes the superannuation expense incurred by the Authority in respect of members of the accountable authority.

### Remuneration of Senior Officers

The number of Senior Officers, other than Senior Officers reported as members of the accountable Authority, whose total fees, salaries, superannuation, non-monetary benefits and other benefits for the financial year fall within the following bands are:

	2012	2011
\$80,001 - \$ 90,000	-	1
\$120,001 - \$130,000	-	1
\$130,001 - \$140,000	-	1
\$140,001 - \$150,000	1	-
\$150,001 - \$160,000	-	2
\$160,001 - \$170,000	2	-
\$180,001 - \$190,000	-	1
\$200,001 - \$300,000	1	-

The total remuneration of senior officers is:

684,349

834,890

The total remuneration includes the superannuation expense incurred by the Authority in respect of senior officers other than senior officers reported as members of the accountable authority.

### **31 Remuneration of auditor**

Remuneration payable to the Auditor General for the financial year is as follows:

Auditing of the accounts, financial statements and performance indicators.

35,600

33,500

### **32 Related bodies**

The Authority had no related bodies during the financial year.

### **33 Affiliated bodies**

The Authority had no affiliated bodies during the financial year.



# KEY PERFORMANCE INDICATORS 2011/12

## KEY OUTCOME

Healthway's outcome change behaviour and environments to improve health.

## KEY EFFECTIVENESS INDICATORS

Healthway's effectiveness indicators report on distinct areas that measure the extent to which Healthway's key outcome has been met.

These indicators are as follows:

- extent to which funded organisations have met the requirements and objectives agreed to with Healthway (refer to contractual evaluation measure);
- extent to which sponsorship as a strategy contributes to health behaviour change (refer to Sponsorship Monitor Survey); and
- extent to which Healthway support has enabled capacity building activities in the community (refer to capacity building indicator).

Since 1992, quantitative evaluative data measuring the outcomes of Healthway funded projects have been extracted and reported by the Health Promotion Evaluation Unit (HPEU) which is an independent academic group based at The University of Western Australia.

Healthway has developed a new Strategic Plan 2012-2015 and as part of this process the key performance indicators will be reviewed during 2012/13 to ensure that they are aligned to the new Strategic Plan.

### Contractual Evaluation Measure

#### Extent to which funded organisations have met the requirements and objectives agreed to with Healthway

Healthway has adopted a six point scale under a Graduated Project Evaluation approach, developed through HPEU. Each project receives a score by Healthway upon the completion of the project as measured against a set of criteria and contractual obligations. These are then aggregated in the table below and reflected against respective program areas.

Grant and sponsorship recipients are required to complete statistical forms at the conclusion of each project. These are used as part of the project assessment, to arrive at a contractual evaluation measure. Other factors include assessment by Healthway Board members, Committee members and staff or by health agency representatives monitoring the respective grant or sponsorship.

#### Key to Scores

Score	Descriptive Interpretation	Notional number interpretation
6	The outcomes <sup>1</sup> of the project exceeded those required by the contract to a very substantial degree. The project delivered outstanding value for money.	150%+
5	The outcomes <sup>1</sup> of the project exceeded those required by the contract to a large degree. The project delivered excellent value for money.	120-149%
4	The outcomes <sup>1</sup> of the project were consistent with, or in the vicinity of, those required by the contract. The project delivered good value for money.	95-119%
3	The outcomes <sup>1</sup> of the project fell short of those required by the contract, but were still within the bounds of acceptability. The project delivered marginally adequate value for money.	75-94%
2	The outcomes <sup>1</sup> of the project fell well short of those required by the contract. The project delivered poor value for money.	50-74%
1	The outcomes <sup>1</sup> of the project fell short of those required by the contract to a very substantial degree. The project delivered completely unacceptable value for money.	<50%



## Contractual Evaluation Measures of all Projects and Sponsorships

Contractual evaluation measure: Average contractual evaluation score (cf. Norm of 4.0)	2012/13 Target	2011/12 Actual	2010/11	2008/09	2007/08
Health Promotion Projects	4.0	4.0	4.1	4.1	3.9
Arts projects	4.0	4.0	4.1	4.0	4.1
Sport projects	4.0	3.9	3.9	4.0	3.9
Racing projects	4.0	4.0	4.1	4.0	4.0
Support Sponsorship	4.0	4.0	4.0	4.0	4.0

The contractual evaluation measures for 2011/12 are consistent with previous years and generally within the targets established for the period. The measures reflect that grant and sponsorship recipients continue to understand and meet Healthway's objectives and the requirements contained within grant and sponsorship agreements. From 1 July 2010, sponsorship reforms came into effect that introduced the implementation of minimum health promotion, structural and co-sponsorship requirements covering areas such as tobacco control, nutrition and alcohol. As these sponsorships reach evaluation stage, contractual evaluation scores are being monitored to assess the impact of these requirements on the organisations meeting their contractual obligations. The results are showing that organisations have been able to meet their contractual obligations.

From 2012/13, Healthway will be implementing its new Strategic Plan 2012-16 and in the period ahead, Healthway will continue to support organisations to meet contractual obligations and remain aligned to the Strategic Plan.

Targets proposed for 2012/13 are consistent with prior years and also reflect the proposed Strategic Plan 2012-16. The target for each sponsorship and grant program is set at an average of 4.0 acknowledging that projects are expected to meet the contracted obligations and provide good value for money.

<sup>1</sup>. Reference to outcomes takes into account measures relating to educational strategies, population reach, contributions to increases in individual knowledge and skills and the extent to which organisations have implemented health policies and maintain a healthy environment. These contractual evaluation measures relate directly to Healthway's overall outcome.

## Sponsorship Monitor Survey

Extent to which sponsorship as a strategy contributes to health behaviour change

	2011/12	2010/11	2008/09	2006/07
% People attending Healthway sponsored events who were aware of the health message	75.6	59%	74%	72%
% People attending a Healthway sponsored event who correctly understood the health message	59.2	49%	58%	65%
% People who showed intention to act on health message	14.5	14%	17%	21%

As part of their evaluation work, HPEU has developed a standard set of instruments and methodology, which have been published in the peer reviewed scientific literature, enabling them to undertake extensive audience surveys at Healthway sponsored events. These surveys, compiled over the course of a year are collectively known as the "Sponsorship Monitor" and measure the impact of health messages on audiences, including health message awareness, understanding of the message and intention to act on the message promoted at the event.

These studies confirm the effectiveness of sponsorship as a strategy to achieve high levels of awareness and comprehension of health messages at sport, arts or racing events. They also provide evidence that health sponsorship can lead to behaviour change.

# KEY PERFORMANCE INDICATORS 2011/12 (CONTINUED)

Due to the complexity of the survey and the analysis required, these extensive surveys are generally undertaken every alternate year. Healthway launched the new sponsorship program in 2010 and the Sponsorship Monitor implemented in the 2011/12 represents the first systematic evaluation of message promotion sponsorships under the new Healthway sponsorship program framework.

A total of eight major sport, arts and racing projects was evaluated in the 2011/12 Sponsorship Monitor, and surveys were collected from 668 people aged over 15 years randomly selected across these projects.

In the 2011/12 Sponsorship Monitor, 57% of respondents completed interviewer-administered questionnaires and 32% completed self-administered surveys. The results show that 75.6% of people who attended a Healthway message-sponsored event were aware of the health message being promoted at the event. Target results for these surveys aims at maintaining previous levels with strategies for slight incremental improvements on prior survey.

The overall awareness levels are considerably higher than those measured in 2010/11 when only a limited Sponsorship Monitor was possible during the introduction of the new Sponsorship program in 2010. Awareness levels measured in 2011/12 are broadly similar to but slightly higher than those measured in previous years, as the preceding table shows.

An important step in encouraging people to adopt healthier lifestyles is to ensure that they correctly understand the health messages promoted at events. The Sponsorship Monitor asks patrons about their understanding of the health message being promoted at the surveyed events. Note that only people who are aware of the message can be asked if they understand its meaning. The levels of message comprehension or understanding measured in the 2011/12 Sponsorship Monitor compare favourably with earlier years, at 59% of all patrons surveyed in 2011/12 (49% in 2010/11 and 58% in 2008/09).

As an indication of changing behaviours and habits, survey participants are asked about their intentions to act on the message. Again, only people who were aware of the message can be asked about their intentions. The proportion of the overall sample who indicated an intention to act on the message in the 2011/12 Sponsorship Monitor higher, at 21% of all respondents surveyed, compared with 14% in 2010/11 and 17% in 2008/09.

The Sponsorship Monitor Surveys provide evidence over many years that a consistently high percentage of people attending events are aware of and understand the health promotion message promoted at Healthway-sponsored events, and process the information to the extent that they form an intention to act on the messages promoted. The next sponsorship monitor survey is expected to be undertaken within the next two years.

<sup>2</sup> Donovan R, Jalleh G, Clarkson J and Giles-Corti B. 1991. Evidence for the effectiveness of sponsorship as a health promotion tool. Australian Journal of Primary Health Interchange 5 (4) 81-91

## Capacity Building

### Extent to which Healthway support has enabled capacity building activities in the community

The Healthway Strategic Plan 2008-2011 placed a priority on building and sustaining capacity of individuals, organisations and communities to promote and improve the health of Western Australians which is recognised in the two overarching themes being "sustainable change" and "investing in the future".

For Healthway, capacity building recognises the development of sustainable skills, structures, resources and commitment to embrace behavioural change that continues beyond the term of a project or program.

Healthway has identified four capacity building domains as follows:

1. Organisational commitment including policy changes;
2. Building partnerships and creating supportive environments;
3. Building health promotion skills and activities; and
4. Reaching new priority groups.

These domains form part of an extensive and comprehensive Organisational Survey conducted independently for Healthway by the Health Promotion Evaluation Unit (HPEU) approximately every four years. These surveys aim to collect data on the impact of Healthway funding on funded organisations, in terms of policy implementation, population reach and health promotion capacity. Therefore to provide ongoing comparative data an abridged survey has been conducted every two years since 2005/6 as shown in the Table below.

In line with the review of the Healthway Sponsorship Program in 2010, the HPEU reviewed the methodology for the Organisational Survey and introduced a new on-line survey during 2011/12, which all Healthway sponsorships are asked to complete following the end of their contracts. The on-line survey is a shortened version of the previous Organisational survey and will enable Healthway to collect data on capacity building measures on an annual basis for the first time.

The Table below presents comparative data relating only to the responses from sport, arts and racing organisations from both the full and abridged Organisational surveys as well as from the new online survey introduced for the first time in 2011/12.

The results in the Table show consistently high levels of capacity development among funded sport, arts and racing organisations over many years. The data also show a large increase in the proportion of organisations reporting that Healthway sponsorship had resulted in higher levels of organisational commitment to health promotion and implementation of health policies in 2011/12, compared with previous years.

The Table shows that capacity building measures/indicators relating to the implementation of health policies, building new partnerships and reaching new priority groups have all generally increased among sponsored organisations over the past 15 years.

The target measures for the 2011/12 organisational online survey aimed at achieving results consistent with prior years with small incremental improvements. This approach reflects the need for long term investment across the four broad health promotion capacity building domains identified above to reflected increasing achieve increased results.

The overall trend of the data suggests that Healthway continues to invest in areas that are impactful on health promotion capacity building across the four broad dimensions measured. The results also suggest that organisations in receipt of Healthway funding are able to deliver on a range of activities that align with Healthway's stated capacity development objectives.

Table below shows Healthway impact on the health promotion capacity of funded sport, arts and racing organisations between 1997/8 to 2011/12.

# KEY PERFORMANCE INDICATORS 2011/12 (CONTINUED)

Year and Survey Type	2011/12 Online survey	2009/10 Full survey	2007/08 Abridged survey	2005/06 Full survey	2004/05 Abridged survey	2001/02 Full survey	1997/98 Full survey
Surveyed projects	72	302	112	462	220	672	616
% organisations implementing health policies and demonstrating commitment to health promotion as a result of Healthway funding	94	75	82	75	75	61	50
% organisations building partnerships and creating supportive environments as a result of Healthway funding	70	70	72	63	65	67	64
% organisations committed to building and sustaining health promotion skills as a result of Healthway funding	66	72	64	73	69	68	74
% organisations reaching new priority groups as a result of Healthway funding	70	64	62	69	70	66	57

## KEY EFFICIENCY INDICATORS

### Grants and Sponsorships

The efficiency indicator measures the average administrative cost for every \$100 of approved funding for the WA community through the grant and sponsorship programs.

Administrative costs are apportioned between health promotion capacity building projects and grant and sponsorship activities. This apportionment is based on a methodology that involves detailed process mapping of organisation wide work flow analysis of each component of the grants and sponsorships life cycle taking into account direct proportion of labour effort for each component from assessing applications through to acquittal.

The table below shows the administrative corporate costs associated with planning, assessing, approval, sponsorship support, monitoring and acquittal of grants and sponsorships. From 1 July 2011, the support sponsorship function returned in-house and administrative and employees costs associated with this function has been reflected as part of total corporate costs. After allowing for this change, the 2011/12 average administration cost per \$100 of approved funding was calculated at \$16.33, slightly higher than the target of \$15.42.

In 2012/13 the average administrative cost per \$100 of approved funding is expected to remain consistent with the previous year at \$16.34.

	2011/12 Target \$	2011/12 Actual \$	2010/11 \$	2009/10 \$	2008/09 \$
Average cost per \$100 of approved funding	15.42	16.33	12.82	12.73	10.60

## Capacity Building

Following the First International Conference on Health Promotion, the World Health Organisation released the Ottawa Charter which provided guiding principles for effective health promotion capacity building based on:

Building health public policy;

- Creating supportive environments for sustainable change;
- Strengthening community action;
- Developing personal knowledge and skills;
- Promoting shared community and social responsibility for improving health;
- Developing, consolidating and expanding partnerships for health;
- Increasing the skills and resources of communities to promote healthy behaviours; and
- Empowering individuals to make informed decisions

Healthway has continued to apply these principles which were also further implemented as part of the sponsorship reforms undertaken in 2010. As part of Healthway's capacity approach, it supports funding applicants through a number of mechanisms including pre-funding application meetings with organisations to outline health policy requirements and provide advice, monitor and assist funded organisation to achieve agreed capacity building outcomes and program specific workshops/seminars to encourage capacity building in funding applications.

Successful funding applications that contain a health promotion capacity building component are reflected in the indicator below as an average cost per application for Healthway support provided towards assisting recipients to implement and sustain capacity building. This indicator is calculated using a measure of the level of direct labour effort contributed to capacity building activities as a portion of total Healthway administrative costs and taking into account the number of capacity building applications for the year.

In 2011/12 Healthway approved 740 funding applications with capacity building components representing an increase of 102 approved applications on the prior year with invested in capacity building remaining strong. The higher average administrative cost in 2011/12 of \$712 compared to previous years mainly reflects the administrative and employee costs of the support function returning in-house from 1 July 2011.

Commencing from 1 July 2012 Healthway will be working closely with the Australian Drug Foundation to introduce the National Good Sports Program to Western Australia. As part of this program there is a clear capacity building component to the projects funded under this program. Accordingly, this has been included in the average administrative target costs for funding applications with capacity building components for 2012/13 of \$626 per application.

	2011/12 Target \$	2011/12 Actual \$	2010/11 \$	2009/10 \$	2008/09 \$
Average administrative cost per funding application with a capacity building component	743	712	651	592	523

# FUNDING TABLE

## HEALTH PROMOTION GRANTS FUNDED IN 2011/2012

Health Issue/Organisation	Project Title	Amount \$
<b>REDUCING HARM FROM TOBACCO</b>		
Australian Council on Smoking and Health	ACOSH 2011-2014	225,884
Cancer Council Western Australia Inc.	Make Smoking History Campaign	495,566
Challis Primary School	SMART Schools Grant - Young Director's Festival 2012	2,500
Dalyellup College	SMART Schools Grant	2,400
East Narrogin Primary School	SMART Schools Grant	2,500
Grovelands Primary School	SMART Schools Grant - Young Director's Festival 2012	1,850
Kingsley Primary School	SMART Schools Grant - Young Director's Festival 2012	2,200
Lesmurdie Senior High School	SMART Schools Grant	1,500
National Heart Foundation of Aust (WA Division)	Smarter Than Smoking - Young Director's Festival 2012	3,000
National Heart Foundation of Aust (WA Division)	Smarter Than Smoking Project	709,000
Rockingham Senior High School	SMART Schools Grant	1,231
Roleystone Community College	SMART Schools Grant - Young Director's Festival 2012	2,500
Southern Aboriginal Corporation	Gnumaries Hurt: Reducing Tobacco consumption	12,080
Westfield Park Primary School	SMART Schools Grant - Young Director's Festival 2012	2,500
Willandra Primary School	SMART Schools Grant - Young Director's Festival 2012	2,500
<b>REDUCING HARM FROM ALCOHOL</b>		
Curtin University of Technology	SHAHRP Refresh: up-dating the School Health and Alcohol Harm Reduction Project	45,328
Drug and Alcohol Office	Young People and Alcohol Education Campaign and Engagement Strategy	485,000
<b>PREVENTING OVERWEIGHT AND OBESITY</b>		
Ability Solutions Inc	Healthy Habits Expansion	43,013
Beldon Primary School	Health Promoting Schools Grant	2,300
Campbell Primary School	Health Promoting Schools Grant	2,180
Communicare Inc	Seed2Feed - A sustainable approach to healthy eating	4,000
Community Living Association Inc	My Life My Community Sensory Garden	3,340

Cooinda Primary School Parents and Citizens Association	Health Promoting Schools Grant	2,500
Federation of WA Police and Community Youth Centres - Fremantle	Indigenous Healthy Choices Program	4,450
Foodbank WA Inc	PHAA 2nd National Food Future's Conference	850
Kimberley Aboriginal Medical Services Council	Halls Creek Ladies Walking and Activity Group	8,000
Maendeleo Association of WA Inc	Healthy Cooking Nutrition	4,550
Mboko Children Association of WA Inc	Healthy Cooking Healthy Eating	4,795
Multicultural Services Centre of Western Australia	Cross Cultural Healthy Lifestyle Project	76,259
National Heart Foundation of Aust (WA Division)	Global Physical Activity Network (Global-PA-net)	20,000
North Parmelia Primary School	Health Promoting Schools Grant	1,800
Northcliffe Family Centre Inc	Nutrition Education & Cooking Sessions to Year 3 to Year 6 students	494
South Perth Primary School	Health Promoting Schools Grant	2,300
Wanneroo Primary School	Health Promoting Schools Grant	2,500
<b>PROMOTING MENTAL HEALTH AND WELLBEING</b>		
Beaconsfield Primary School	Health Promoting Schools Grant	2,500
Curtin University of Technology	Creating a Mentally Healthy WA: The Act-Belong-Commit Campaign Phase III (2011-2013)	400,000
Farmsafe WA Alliance Inc	Managing the Pressures of Farming	19,426
Men's Resource Centre (Inc)	World Mental Health Promotion Conference	1,365
Mount Barker Community College	Health Promoting Schools Grant	2,400
North Lake Senior Campus	Health Promoting Schools Grant	2,270
Queen of Apostles Catholic Primary School	Health Promoting Schools Grant	2,300
Swan Secondary Behaviour Centre	Health Promoting Schools Grant	2,500
The Moerlina School	Health Promoting Schools Grant	2,472
Healthway Scholarships	7th World Conference on the Promotion of Mental Health and Behavioural Disorders	30,000
WA Country Health Service - Great Southern - Albany	World Mental Health Promotion Conference	980
WA Country Health Service - Great Southern - Albany	World Mental Health Promotion Conference	980



## FUNDING TABLE (CONTINUED)

WA Country Health Service - Great Southern - Albany	World Mental Health Promotion Conference	980
Westminster Education Support Centre	Health Promoting Schools Grant	1,930
<b>OTHER HEALTH PROMOTION PROJECTS</b>		
Cancer Council Western Australia Inc.	SunSmart Campaign 2011-2014	150,000
Curtin University of Technology	Building public health capacity through advocacy using traditional and innovative methods of delivery	167,122
Curtin University of Technology	Building public health through "community knowing" A knowledge transfer program	119,600
Edith Cowan University Joondalup	Indigenous Health: Translating Web Knowledge into Prevention Practice	59,214
Marnja Jarndu Women's Refuge Inc.	Promoting Healthy Lifestyle Choices for Families with Educational Workshops	7,700
Milligan: Community Learning and Resource Centre Inc	A Healthy Start: A focus on teen and young mums and their babies	7,720
National Heart Foundation of Aust (WA Division)	Health + Medicine Online 2012/13	100,000
Save the Children Fund (WA Division) Inc	Deadly Bardi Men's Group	10,000
WA Health Promoting Schools Association	What is a Health Promoting School?	12,949

## HEALTH PROMOTION RESEARCH GRANTS FUNDED IN 2011/2012

Health Issue/Organisation	Project Title	Amount \$
<b>REDUCING HARM FROM TOBACCO</b>		
Curtin University of Technology	A randomised controlled trial of a smoking cessation intervention for young pregnant women	29,796
<b>REDUCING HARM FROM ALCOHOL</b>		
Curtin University of Technology	Alcohol norms and associated harms amongst adolescents	120,000
Curtin University of Technology	Drinking in the suburbs: the experiences of Aboriginal young people	114,918
University of WA	Developing and testing cancer warning statements for alcoholic beverages	119,474
<b>PREVENTING OVERWEIGHT AND OBESITY</b>		
Curtin University of Technology	Enhancing activity, nutrition and mental health in overweight adolescents	150,000
Curtin University of Technology	HP Research Training Scholarship - Elissa Burton	36,500
Curtin University of Technology	The impact of workplace design on sedentary behaviour: A case study	28,385
Curtin University of Technology	Food Law, Policy and Communications to Improve Public Health	149,321
University of WA	Long-term follow-up of Liveable Neighbourhoods: research into practice	150,000
University of WA	The built environment and health: associations across the life course	78,024
University of WA	A health related movement based video games rating measure for consumers	149,950
University of WA	HP Research Training Scholarship - Ms Clover Maitland	36,500
<b>PROMOTING MENTAL HEALTH AND WELLBEING</b>		
Curtin University of Technology	Enhancing the effects of the positive thinking program: a longitudinal evaluation	110,000
Curtin University of Technology	Health Promotion Research Scholarship - Kelly Prandl	36,500
Curtin University of Technology	HP Indigenous Research Training Scholarship - Ms Michelle Anne Webb	59,000
Curtin University of Technology	Indigenous Research Scholarship - Darren Garvey	59,000
Curtin University of Technology	Visiting Fellow - Dr Michael DeGagne	24,205

## FUNDING TABLE (CONTINUED)

Edith Cowan University Joondalup	An empirical intervention to reduce cyber bullying in adolescents	119,599
Edith Cowan University Joondalup	Building school capacity to reduce social aggression among students	146,880
Edith Cowan University Joondalup	SKSS Bullying Prevention Project Extension	149,879
Edith Cowan University Joondalup	Health Promotion Research Scholarship - Leanne Lester	36,500
Edith Cowan University Joondalup	Raising adolescents: developing strategies for fly in/ fly out parents	29,689
University of WA	Loneliness in Children: Building a Model for Mental Health Promotion	109,791
University of WA	HP Research Fellowship - Lisa Wood	115,458
<b>OTHER HEALTH PROMOTION RESEARCH GRANTS</b>		
Cancer Council Western Australia Inc.	Impact of spaced education on cancer knowledge among Aboriginal Health Professionals	29,925
University of WA	HP Research Training Scholarship - Ms Christina Mills	36,500
University of WA	Promoting health self-management by people living with mental illness	97,511
University of WA	More than talk: An Aboriginal, non-Aboriginal partnership for action	142,723
University of WA	HP Research Fellowship - Dr Sarah Foster	109,277

## SPONSORSHIP PROJECTS FUNDED IN 2011/2012

Health Issue/Organisation	Project Title	Amount \$
<b>REDUCING HARM FROM TOBACCO</b>		
Albany Speedway Club (The)	Junior Sedan Series and Junior Development Scheme	4,000
Art On The Move NETS	Art On The MOve Education Events	35,000
ATV Social and Racing Club Inc	Pony Express Race Series	20,000
Augusta Margaret River Hot Rod Club	Wayne Armstrong Memorial Cup and South West Junior Championship	7,500
Australian Jazz Education Association	West Australian Schools' Jazz Festival 2011	4,000
Avon Valley Ladies Golf Association	Golf for all in the Avon Valley	2,000
Barking Gecko Theatre Company	Barking Gecko 2011 Annual Program	20,000
Barking Gecko Theatre Company	Barking Gecko 2012 Annual Program	60,000
Bluegem Holdings Pty Ltd (T/A Trievents WA)	Perth Criteriums	35,000
Bridgetown Harness Racing Club (T/A Bridgetown Trotting Club)	Bridgetown Easter Stampede Harness Meeting	5,000
Broome Senior High School	Kimberley Cup	5,000
Bunbury Car Club Inc	USA vs WA Late Model Challenge, Southern Thunder Series Rounds 2 & 3	20,000
Bunbury Women Aboriginal Corporation	Indigenous Football Carnival	4,000
Central Midlands Agricultural Society	100th Annual Moora Agricultural Show	8,000
Churches Commission on Education Inc	Chaplains' Cup Interschool Basketball Carnival	1,000
City of Fremantle	Wardarnji Indigenous Festival, Children's Fiesta, Norfolk Lanes Youth Festival, Concert in the Park	30,000
City of Greater Geraldton	Wind on Water Youth Concert 2012	15,000
City of South Perth	South Perth 2012 Fiesta	25,000
Coastal Motorcycle Club Inc (The)	Summertime Junior & Senior MX Opens, Civil War of Motocross	4,500
Collie Racing Drivers Association	Junior Sedan Challenge	10,000
Collie Racing Drivers Association	Collie Speedway and Junior Sedan Challenge	15,000
Country Arts WA Inc	Shows on the Go and Sand Tracks	72,000
Ellenbrook Cultural Foundation Incorporated	Stand Tall - Youth Arts Workshop and Exhibition	10,000
Esperance Speedway Association	2011/2012 Season and WA Junior Sedan State Title	12,000

## FUNDING TABLE (CONTINUED)

Event Assist Inc	Peel Events Program 2012	15,000
Football West Limited	Sponsorship 2010 - 2012	50,000
Formula Vee Association of WA Inc	Formula Vee Racing WA	4,950
Golf Western Australia (T/A Golf WA)	Key Events	2,300
Golf Western Australia (T/A Golf WA)	Key Events	130,000
Koorda and Districts Agricultural Society	Koorda Agricultural Show	4,000
Lacrosse WA	Lacrosse for Life	80,000
Lightweight Motor Cycle Club Inc	Nite Time Motor Cycle Arena Cross	2,500
Manjimup Speedway Club	Manjimup Speedway Meetings	4,000
Mellen Brunton Discretionary Trust (T/A Mellen Events)	Summer Concert Season 2011-2012	65,000
Mini Car Club WA Inc	WA Motokhana and Australian Championships	2,500
Moora Race Club Inc	Moora Cup Meeting	5,000
Motorcycling Western Australia Inc	MotoSafe and Minikhana	20,000
Multicultural Expression for Kids Inc	Drumbeat	2,000
Murray Auto Xtravaganza Inc	Murray Auto Xtravaganza 2012	10,000
Narrogin Race and Pace	Narrogin Racing 2011/12 - 2012/13	10,000
Netball WA	Sponsorship 2011 - 2012	110,000
Pathfinders Trials Motorcycle Club	2011 Mototrials State Championships	2,500
Pathfinders Trials Motorcycle Club	2012 Australian MotoTrials Championships	15,000
Peel Districts Mountain Bike Club	Downhill Mountain Bike State Championship	1,500
Pro Subi Limited	Subi Street Festival 2011	4,500
SAAA Chapter 24 Jandakot (WA)	Langley Park Fly In	15,000
Shire of Coolgardie	State Basketball League Game 2012	5,000
Shire of Kojonup	The Gathering - The Great Southern Regional Youth 2012	4,000
South Metropolitan Area Health Service	Music to Open Your Mind 2012-2014	5,000
Speedway Motorcycle Club WA Inc	West versus The Rest Interstate Solo Challenge	4,000
Squash Rackets Assoc of WA (T/A WA Squash)	WA Squash Participation Program	50,000
Targa Southwest Pty Ltd	Killarnee Targa South West	15,000
Targa West Pty Ltd	Targa West Tarmac Rally	130,000
Trail and Enduro Motorcycle Club WA Inc	2013 Australian Four Day Enduro Championships	8,000

Vietnamese Community In Australia WA Chapter Inc	TET New Year 2012	5,000
WA MX	WA State and Junior Motocross Championships	40,000
West Australian Car Club Inc	Forrest Rally	55,000
West Australian Car Club Inc	2012 - 2013 Rally WA	3,500
West Australian Music Industry Association	WAMIA Schools Alive Program	100,000
West Australian Opera	Opera Incursions School Program 2012	25,000
West Australian Symphony Orchestra	Symphony in the City and EChO Ensemble Partner	27,000
Western Australian Fencing Association Inc	National Cadet Fencing Championships	2,500
Western Australian Hockey Association (T/A Hockey WA)	Promoting Health through Hockey	35,000
Western Australian Rugby League Ltd	WA Rugby League Sponsorship 2012	62,500
Western Australian Table Tennis Association	Table Tennis Coaching and Participation Program	15,000
Western Desert Sports Council	Western Desert League - April 2012 Carnival	40,000
Western Desert Sports Council	2012/2013 Western Desert Premiership League Program	20,000
Westside BMX Club	2011/2012 State Super Series Round	4,000
Zaccaria Concerts and Touring	WA Nocturnal Concerts at the Zoo	15,000
<b>REDUCING HARM FROM ALCOHOL</b>		
Armadale Gosnells and Districts Youth Resources In	Jull Street Mall Youth Arts Project	15,000
Burdekin Youth in Action Inc	Indigenous Hip Hop Projects West Kimberley Community Workshops 2011	20,000
Country Arts WA Inc	Y Culture Regional	70,000
Gelganyem Limited	Barramundi Concert 2012 and Associated Workshops	17,000
Holyoake the Australian Institute on Alcohol and Addictions	DRUMBEAT Facilitator Training and Youth Leadership Initiative	32,000
Madjitil Moorna	Madjitil Moorna and Halls Creek Mob 2011	25,000
Madjitil Moorna	The Madjitil Moorna Respect Yourself Respect Your Culture Collaborative Singing Project on Noongar Country	7,000
Mandurah Performing Arts Inc	April's Fool	1,500
Mowanjum Artists Spirit of the Wandjina Aboriginal Corporation	Mowanjum Festival and Youth and Childrens Workshops	15,000

## FUNDING TABLE (CONTINUED)

Mundaring Arts Centre Inc	Mundaring Arts Centre Community Connection Project	30,000
NAIDOC Perth Inc	Australia Day Aboriginal and Cultural Festival	5,000
Netball WA	West Coast Fever	250,000
Nexus MG Pty Ltd	Australian Beach Volleyball Series - WA Round	15,000
Perth Heat Baseball Club of the Australian Baseball League Pty Ltd	Perth Heat - Australian Baseball League Team	70,000
Pinjarra Katijin	Mungah Festival 2012	15,000
Propel Youth Arts WA Inc	YCulture Metro	55,000
Puranyangu-Rangka Kerrim (Aboriginal Radio) Aboriginal	Halls Creek Nguyuru Waaringarrem Music Festival	12,000
Surfing Western Australia Inc	Pro Margaret River 2011-2012	291,250
Tom Price Nameless Festival Inc	People's Exhibit Nameless Jarndunmunha Festival	5,000
Town of Cambridge	Exposure Youth Music Festival 2012	1,600
Town of Port Hedland	PORTBOUND - Pilbara Youth and Health Festival	5,000
Tura New Music Ltd	Tura New Music Regional Program 2012	40,000
University of WA Sport and Recreation Association	Tertiary Sports WA Program 2011-2012	20,000
Western Australian Trotting Association	2012 - 2013 Sponsorship	70,000
Wildcats 2000 Pty Ltd	Wildcats Sponsorship 2009-2011	165,000
Wirlomin Noongar Language and Stories Project Inc	Wirlomin Project Stage 2 Country School Touring	15,000
Yirra Yaakin Aboriginal Corporation	Yirra Yaakin Triennial Program 2012-2014	60,000
YMCA of Perth Youth & Community Services Inc	YMCA Skate Series	35,000
YMCA of Perth Youth & Community Services Inc	YMCA Open Arts	45,000
<b>PREVENTING OVERWEIGHT AND OBESITY</b>		
Ability Solutions Inc	Healthy Habits Expansion	43,013
All Saints College Inc	Storylines Festival 2012	5,000
Araluen Botanic Park Foundation Inc	Araluen's Fremantle Chilli Festival 2012	20,000
Artatac - Busselton Beach Festival Inc	Artatac Youth and Multicultural Arts Event 2012	10,000
Australian Bushmen's Campdraft and Rodeo Association Ltd (The)	Junior Rodeos	4,000
Australian Dance Council WA Branch (Ausdance) Inc	Move IT with Dance	43,000

Australian Dancing Society Ltd WA Branch	2012 Night of Stars National Dancesport Championship	5,000
Avondale Farm Project Assoc	Beverley Harvest Festival at Avondale	3,000
Awesome Arts Australia Ltd	Creative Challenge Program 2012 and 2012 School Holiday Workshops	70,000
Badminton Association of WA Inc	2012 Annual Program	35,000
Ballet Workshop Incorporated	Prompt Corner Perth City Ballet	32,000
Baseball WA Limited	Development Programs 2011-2012	100,000
Bicycling Western Australia Inc	More People Cycling More Often	40,000
Bindoon and Districts Agricultural Society	Annual Bindoon and Districts Agricultural Show 2011	3,000
Bluegem Holdings Pty Ltd (T/A Trievents WA)	Albany Port to Point 2011	3,000
Bowls WA (Royal WA Bowling Association)	Junior Membership and Participation Program	30,000
Broome Barracudas Swimming Club Inc	2012 Kimberley Open Short Course	3,000
Broome Soccer Association	2012 Annual Program	20,000
Broome Surf Life Saving Club	Sunset Challenge Carnival	5,000
Broome Touch Association	Annual Program 2011-2012	12,500
Broome Tri Sports Association	2011 Cable Beach Triathlon	2,500
Broome Tri Sports Association	2012 Cable Beach Triathlon	2,500
Bunbury Agricultural Society	Bunbury Horse and Country Music Show	5,000
Busselton Allsports Inc	Busselton Jetty Swim 2011 - 2013	17,000
Buzz Dance Theatre	BuzzED program and associated performance program	75,000
Calisthenics Association of WA Inc	Development Projects 2011 - 2012	17,700
Capel Fest Inc	CapelFest 2012	10,000
Caric Options Pty Ltd	Kalamunda 50/50 Mountain Bike Challenge	2,500
Children's Book Council of Australia (WA Branch)	Children's Book Week (CBW) WA	18,000
CIC Events Promotion Pty Ltd	2012 UCI World Cycling Tour Qualifying Events - Perth	15,000
City of Albany	The Albany Boat Show	3,000
City of Bunbury	Australia Day Youth Zone 2012 and The 2012 Funtabulous Kidsfest	25,000
City of Greater Geraldton	Big Sky Readers and Writers Festival	4,000
City of Joondalup	Summer Events Cultural Program	34,500



## FUNDING TABLE (CONTINUED)

Conservation Council of WA	Western Australian Environmental Art Exhibition and Award	10,000
Country Arts WA Inc	Gascoyne May Circus Program	20,000
Country Music Club of Boyup Brook WA Inc	West Australian Country Music Awards	20,000
DADAA Incorporated	DADAA Multi Year Program 2011 - 2013	5,000
Dancesport Australia Ltd	28th West Coast Classics Dancesport Championships 2011	5,000
Donnybrook Apple Festival Inc	Donnybrook Apple Festival - Home Grown & Healthy	3,500
Dunsborough and Districts Progress Assoc Inc	Dunsborough Bay Fun Run	4,000
Eastern Goldfields Cycle Club	The Community Challenge	8,500
Equestrian WA Inc	Equestrian Program 2012	62,000
Fair Game Sports Equipment Inc	Fair Game	2,500
Festival of Busselton Inc	Festival of Busselton 2012	10,000
FolkWorld Inc	Fairbridge Festival 2012	23,000
Football West Limited	Sponsorship 2010 - 2012	240,000
Fremantle Children's Literature Centre	Annual Outreach Residence Programme for Metropolitan, Rural, Regional and Remote Primary Students	40,000
Gaelic Athletic Association of WA Inc	St Patrick's Day Family Carnival	3,000
Garnduwa Amboorny Wirnan Aboriginal Corporation	Communities Project	200,000
Goalball Western Australia Inc	Go For Goalball	20,000
Golf Western Australia (T/A Golf WA)	Play Golf Development Program	10,500
Gymnastics Western Australia Inc	Championships 2011 - 2012	20,000
Gymnastics Western Australia Inc	Fundamentals For Life	100,000
Harvey District Trotting Club	Harvey Harness Meeting	7,000
Harvey Mainstreet (Inc)	Harvey Harvest Festival	7,500
Kalamunda and Districts Agricultural Society Inc	Kalamunda Annual Show 2012	4,000
Kalgoorlie District Pony Club	Camp and 2012 Rallies	1,500
Kellerberrin and Districts Agricultural Society	Kellerberrin and Districts Agricultural Society	3,000
Kununurra Dragon Boat Inc	Kununurra Biennial Dragon Boat Marathon	3,000
Masters Swimming Western Australia	Swim for Your Life	18,000
Monkey Baa Theatre for Young People Ltd	Tim Winton's The Bugalugs Bum Thief	3,000

Munglinup Golf Club Inc	Professional Golf for Isolated, Rural & Indigenous Youth	1,000
Musica Viva Australia	Musica Viva in Schools Program	57,000
Nannup Music Club	Nannup Music Festival 2012	15,000
Narrogin Primary School P&C Association Inc	Narrogin Triathlon	3,000
National Trust of Australia (WA)	Safe Keeping: 2012 Heritage Festival Exhibition	5,000
Netball WA	Sponsorship 2011 - 2012	170,000
Orienteering Association of Western Australia	Orienteering Promotion and Schools Programs	50,000
Pearl Coast Gymnastics Club Broome	Annual Program 2012	10,000
Performing Lines Ltd	Tour of The Jub Jub Tree, Sensory Theatre Show 2012	5,000
Pingrup Race Club Inc (The)	2012 Pingrup Races	4,000
Pony Club Association of Western Australia Inc	Annual Program of Events 2011-2012	40,000
Pulse Youth Performance Company	Pulse Productions - 2012 Program	25,000
Riding for the Disabled Association WA Inc	Sponsorship Programs 2011 - 2012	40,000
Roe Districts Mens Hockey Association (Inc)	Greater Wheatbelt Junior Hockey Development Program	2,000
Rotary Club of Fremantle Inc	Port to Port Fun Run	6,000
Rotary Club of Heirisson	Claisebrook Carnivale 2012	4,000
Rotary Club of North Perth (Inc)	Hyde Park Community Fair 2012	5,000
Rotary Club of Willetton Inc	Willetton Rotary Community Fair	4,500
Royal Agricultural Society of WA	Perth Royal Show 2011	95,000
Royal Life Saving Society Australia WA Branch Inc	Remote Aboriginal Communities Swimming Program 2011-2012	25,000
Royal Life Saving Society Australia WA Branch Inc	Regional & Remote Communities Aboriginal Swimming Program 2012-2013	45,000
Sailability W.A. Inc	Sailing Opportunities for People with Disabilities	20,000
SC Church (also T/A SouthCity Church)	Nations Summer Nights	15,000
Secret Harbour Pirates District Tee Ball Association	Primary School Teeball Clinics	1,000
Shire of Broome	BRAC 2 Beach Fun Run	5,000
Shire of Bruce Rock	Central & Eastern Wheatbelt Coordinator Scheme	35,000
Shire of Cranbrook	Cranbrook Show 2012	3,000
Shire of Goomalling	Avon Coordinator Scheme 2011-2012	30,000

## FUNDING TABLE (CONTINUED)

Shire of Goomalling	Avon Coordinator Scheme 2012-2013	35,000
Shire of Kalamunda	Bike Week	2,000
Shire of Moora	Midlands District Coordinators Scheme 2011-2012	30,000
Shire of Moora	Midlands District Coordinators Scheme 2012-2013	35,000
Shire of Mundaring	Trek the Trail 2011	7,150
Shire of Mundaring	Trek the Trail 2012	7,150
Shire of Murray	Pinjarra Festival 2012	10,000
Silver Threads Band	Making Music is Fun School Program	17,000
Spare Parts Puppet Theatre Inc	GO Regional Puppet Tour	72,000
Special Olympics Australia Inc	Special Olympics Western Australia	30,000
Steps Youth Dance Company	Annual Program 2012-2014	35,000
Surfing Western Australia Inc	Surfing Annual Program	70,000
Synchro WA	Get In Sync	10,000
Tambellup Agricultural Society	Tambellup Agricultural Society Show Day - Family Entertainment	3,000
The Dardanup Bull and Barrel Festival Inc	Crafty Kids @ The Dardanup Bull and Barrel Festival	3,000
The Rink Pty Ltd	Skate-Smart and Rollersports Classes	25,000
Touch Football Australia	Annual Program	80,000
Town of Port Hedland	Sports Sessions	12,000
University of WA	Western Desert Kidney Health Project	75,000
University of WA	Art Under the Microscope	3,500
Upper Blackwood Agricultural Society Incorporated	Stay Younger, Stronger and in Great Shape Longer Society Show	3,500
WA Circus School Incorporated (The)	Annual Circus and community Outreach Program	30,000
WA Disabled Sports Association	Healthy Participation for People with Disabilities 2011-2012	200,000
WA Disabled Sports Association	Healthy Participation for People with Disabilities 2012-2013	235,000
Wagin Agricultural Society (The)	Thrills & Skills at Wagin Woolorama 2012	17,000
Wagin Trotting Club	Wagin Harness Meetings	4,000
Wembley Primary School Parents & Citizens Association Inc	Community Leap into Spring Fun Run 2011	1,000
West Australian Ballet	Education and Access Partner	60,000
Western Australian Athletics Commission Inc	Athletics Development Programs	85,000
Western Australian Athletics Commission Inc	Perth Track Classic	50,000

Western Australian Cricket Association	WACA Junior Cricket Program	185,000
Western Australian Cycling Federation Inc	Sponsorship 2012	50,000
Western Australian Diving Association Inc (The)	Diving Program	20,000
Western Australian Hockey Association (T/A Hockey WA)	Hockey Program 2011-2012	195,000
Western Australian Institute of Sport	WAIS Community Development Program	80,000
Western Australian Schools Choral Festival Assoc	Children Sing Festival	3,000
Western Australian Swimming Association	Swimming WA Events and Community Programs	100,000
Western Australian Trotting Association	2012 - 2013 Sponsorship	175,000
Western Australian Water Polo Inc	Junior Water Polo Competition	20,000
Westonia Community Resource Centre (formerly Westonia Telecentre)	Professional Golf for Isolated, Rural and Indigenous Youth	1,000
Wheelchair Sports WA Association Inc	Perth Wheelcats and Western Stars State Wheelchair Basketball Teams	50,000
YMCA of Perth Inc	YMCA Active Expos	20,000
Youth Ballet WA Inc	Youth Ballet WA 2012	32,000
<b>PROMOTING MENTAL HEALTH AND WELLBEING</b>		
Acting Up Academy of Performing Arts	Bard on the Bay Theatre Festival 2011	3,500
Acting Up Academy of Performing Arts	Bard on the Bay - Shakespeare's Theatre 2012	3,000
Albany Bowling Club Inc	Open Mixed Lawn Bowls Events	2,500
Albany City Dance Club (Inc)	Friday Night Social Dance Series	2,000
Albany Youth Support Association	Open Access Youth Arts Studio - 2012 Program	25,000
Augusta Margaret River Tourism Association Inc.	Illuminate, Celebrating International Lighthouse Day	3,000
Augusta River Festival (Inc)	Augusta River Festival 2012	3,600
Australian Asian Association of WA Inc	Harmony International FolkFest 2012	10,000
Australian Youth Events Inc	YOH (Youth on Health) Festival	20,000
Beverley Agricultural Society Inc	Annual Show 2011	4,000
Beverley Agricultural Society Inc	Annual Show 2012	4,500

## FUNDING TABLE (CONTINUED)

Black Swan State Theatre Company Ltd	Regional WA Theatre Tour 2012 and Regional Engagement Workshop Program 2012	30,000
Bluegem Holdings Pty Ltd (T/A Trievents WA)	Dwellingup 100 Mountain Bike Classic	15,000
Bunbury and Districts Combined Schools Music Festival Inc	Bunbury & Districts Combined Schools Music Festival	3,000
Bunbury Runners Club	Marathon events	4,500
Camp Quality Limited	WesCarpade Family Concert	2,000
Cannery Arts Centre Inc	The Young at Art 2012	18,000
Canning Vale College	Canning Vale College Circus Troupe	2,500
Catch Music Inc	Catch Music Super Jam Series	10,000
Central South Eisteddfod (Inc)	Central South Eisteddfod and Talent Expo 2012	2,500
Cervantes Cultural Committee	Cervantes Art Festival 2011	3,500
City of Albany	Vancouver Arts Multi Events Program 2011	15,000
City of Canning	Harmony Day Event at the City of Canning 2012	4,000
City of Gosnells	City of Gosnells Community Events Season 2011-2012	14,000
City of Mandurah	Stretch Festival	30,000
City of Rockingham	PhotoVoice Rockingham and School Banner Competition	15,000
Civic Bowling Club Merredin Inc	Merredin Civic Ladies Gala Weekend	1,500
Clackline/Toodyay Karate Club Inc	Toodyay Outdoor Karate Tournament	2,000
Club Rock Incorporated	The Come Out Swinging 3 Town Project	3,000
Collie Country Music Club	Collie Country Music Round Up & Talent Quest	2,500
Community Arts Network Western Australia Ltd	Sharing Stories - Community Sponsorship Fund	50,000
Community Solutions	Youth on Health Festival 2012-2014	90,000
Coodanup Community College	Noongar Story Telling	7,000
DADAA Incorporated	DADAA Multi Year Program 2011 - 2012	40,000
DADAA Incorporated	Arts and Health International Fellowship	35,000
Dalwallinu Creative Arts Inc	Dalwallinu Arts Festival 2011	1,440
Darlington Arts Festival Association Inc (The)	The Darlington Arts Festival 2011	3,500
Deckchair Theatre	Curtin Rising - The Fremantle Campaign	8,000
Denmark Arts Council Inc	Brave New Works #19, Denmark Festival of Voice and Denmark Arts Markets 2012	23,000
Denmark Community Resource Centre	Denmark Connects	2,000

Denmark Education Innovation Centre Inc	Gondwana Southern Edge Arts Artist in Residence Project (Gondwana SEA AIR Project)	10,000
Dowerin Events Management	Dowerin Country Show	15,000
Dowerin Events Management	Ag Art Wear Competition	4,000
Dreamfit Foundation Inc	Dreamfit's Celebrating Ability Community Festival	2,500
Dumbleyung Events Committee Inc	Dumbleyung Triathlon	2,000
Dumbleyung Events Committee Inc	Dumbleyung Bluebird Festival	3,000
Dunsborough and Districts Progress Assoc Inc	Dunsborough Arts Festival	3,500
Earth Solutions-Avon Valley Inc	Historical, Agricultural, Environmental Festival (HAEF)	15,000
Federation of Western Australian Police and Community Youth Centres	Strike II Youth Drop in Service	20,000
Forest Heritage Centre Inc	Spring Festival	2,500
Geraldton Regional Community Education Centre	No Health without Mental Health	2,500
Goldfields Eisteddfod	Goldfields Performing Arts Festival 2011	3,000
Hale School	The Mad Mile 2011	3,000
Hale School	The Mad Mile 2012	3,000
Jazz Club of WA Inc	Jazz Club weekly meetings and Summer Jazz concerts in the Park	2,500
Jazz Fremantle Inc	Jazz Fremantle Concert Programme	3,000
Kojonup Tourist Association	Multicultural Musical Festival	4,000
Lake Grace Development Association	South Central Seniors Games	2,500
Lions Club of Manjimup	Jazz in the Jarrah	2,500
Mandurah All Stars Inc	Razzle Dazzle Variety	3,200
Mandurah Little Theatre Inc	Dusty Springfield the Original Pop Diva (The Musical)	5,000
Mandurah Performing Arts Inc	MPAC 'Get in the Swim' Public Program	20,000
Manjimup Chamber of Commerce and Industry	Manjimup Cherry Harmony Festival 2011	12,000
Men's Resource Centre (Inc)	Australia Day Fun Run & Walk	2,500
Michael Leslie Foundation for the Performing Arts	Pilbara Performing Arts Program (PPAP) Skills Development and Storytelling Workshops 2011-2012	15,500
Mount Helena Residents & Ratepayer Progress Association	Mount Helena Whim Festival	2,500
Narrogin Spring Festival Inc	Narrogin Spring Festival	3,000
Northam's Avon Descent Association Inc	Avon Descent	80,000

## FUNDING TABLE (CONTINUED)

Nova Ensemble Inc	Into the Shimmer Heat	10,000
Parkerville Children & Youth Care	Pipelines Music Competition and Concert	4,000
Patricia Giles Centre	Women's Drumming Circle	2,000
Performing Arts Centre Society of WA Inc	The Yellow Wallpaper	2,000
Quinninup Community Association Inc	Quinninup Market Day, Wine Tasting and Art and Craft Exhibition	1,000
Relationships Australia	Moorditj Yarning Art Exhibition	7,500
Rotary Club of Cannington	Storm the Stage 2011	3,000
Ruah Community Services	Music Feedback - Mental Health Week All-Ages Gigs 2011	12,000
Russian Ethnic Community & Youth Development Assn Rusichi Inc	Rusichi - A Healthy Lifestyle	3,000
Secret Harbour Residents Association	Secret Harbour Spring Market Fair	3,500
Shakespeare WA Ltd	Shakespeare WA's Shakespeare in the Park and initiatives for 2012	18,000
Shire of Bruce Rock	Back to the Bush Reunion Concert 2011	3,000
Shire of East Pilbara	2012 Newman Triathlon	5,000
Shire of Exmouth	Gascoyne Youth Arts Program 2012	20,000
Shire of Northam	Concerts in the Park 2012	10,000
Shire of Wyndham East Kimberley	Kimberley Writer's Festival 2011	5,000
South West Opera Company	The Wizard of Oz	10,000
South West Senior Expo Inc	Spring Festival Concert for Seniors & South West Senior & Community Expo	1,000
Southern Edge Arts	Annual Program of Activities for 2012-2014	45,000
Stalker Stilt Theatre Inc	Buru WA Regional and Metropolitan Tour 2011	18,500
Starick Services Inc	Healing Journeys Children's Art Programme and Exhibition 2012	7,000
Stirling Street Arts Centre	Event Schedule & Annual Workshop/Community Activities Program 2012	15,000
Theatre Kimberley Inc	Theatre Kimberley Youth Theatre Program 2012-2014	32,000
Toodyay Agricultural Society Inc	175 Year Celebrations in 2011	4,000
Toodyay Chamber of Commerce & Industry Inc	Toodyay Moondyne Festival 2012	3,000
Town of Kwinana	Sunset Fiesta	5,000
Town of Port Hedland	Hip Hop Workshop	5,000
Uniting Church in Australia Property Trust (WA)	Family Sunset Concert	1,000

VOCES Arts Networking Group	4th Funny Sculptures, Comedy Coach, LOL Teen Comedy and Wild West Comedy's Roadtrain	20,000
Volunteer Centre of Western Australia Inc	Homeless Connect Perth	5,000
VOW Educational Services Inc	Desert Feet Tour 2011	20,000
WA Country Health Service - Kimberley - Broome	PhotoVoice Broome	4,000
WA Country Health Service - Kimberley - Broome	Mental Health Fun Day	3,000
WA Youth Jazz Orchestra Association	WAYJO Education Series 2012	21,000
WA Youth Theatre Company	Youth Workshops and Program 2012-2014	25,000
Williams Gateway Expo (Inc)	Williams Gateway Expo 2012	3,000
York Society Inc (The)	The York Society Art/Craft and Photographic Awards	2,000
Zig Zag Community Arts Inc	Zig Zag Arts HEYA Project	3,000
<b>OTHER SPONSORSHIP PROJECTS</b>		
Bluegem Holdings Pty Ltd (T/A Trievents WA)	Women's Triathlon	20,000
Collie Swimming Club Inc	Country Pennants 2012	9,000
Recfishwest	Fishsmart Program	50,000
Rowing Association of WA (T/A Rowing WA)	2012 National Rowing Championships and Kings Cup Regatta	9,000
Rowing Association of WA (T/A Rowing WA)	Participation Program 2011 and 2012	20,000
Sports Medicine Australia WA Branch	Management of Healthy Club Program	43,543
Stadium Triathlon Club	Karri Valley Triathlon	3,000
State Sailing Centre of WA Ltd	Boating Education in WA 2012	30,000
Surfing Western Australia Inc	Surfing Projects and Events	35,000
Tennis West	Community Tennis Participation and Development	156,000
USM Events Pty Ltd	Ironman Western Australia 2011	100,000
USM Events Pty Ltd	Ironman Western Australia 2012	115,000
WA Softball Association Inc	Softball WA Sponsorship 2011-12	40,000
Western Australian Swimming Association	Swimming WA Events and Community Programs	36,000
Western Australian Triathlon Association	The Busselton Festival of Triathlon and Ironman 70.3 Triathlon	80,000
Western Australian Triathlon Association	The TRYStars Regional Kids Triathlons	35,000



# FUNDING TABLE (CONTINUED)

## HEALTHY CLUB PROJECTS FUNDED IN 2011/2012

Club	Amount \$
A K Strikers Tee Ball Club Inc	3,000
Albany Junior Cricket Association	3,000
Albany Pony Club	1,000
Albany Surf Life Saving Club	2,380
Albany Triathlon Club	840
Aqua Attack Swimming Club	550
Aranmore Jets Netball Club	1,330
Ardath Tennis Club	800
Ardross Junior Cricket Club	2,085
Armada Roleystone Kelmscott Rugby Union Club	2,000
Ascot Eagles Junior Cricket Club Inc	910
Australind Tennis Club Inc	2,230
Baldivis Equestrian & Pony Club Inc.	800
Balga Junior Football Club	1,400
Ballajura Junior Cricket Club	1,820
Barracuda Swimming Club (prev Cambridge)	1,260
Batavia Buccaneers	188
Bateman Junior Cricket Club Inc	1,660
Bayswater Morley Youth Club	2,300
Bayswater Tennis Club Inc	1,800
Beacon Community Recreation Council	800
Bedford Morley Cricket Club Inc	800
Beechboro Lockridge Junior Cricket Club Inc	1,270
Belmont Junior Football Club	1,400
Belmont Junior Soccer Club	1,200
Belmont Villa Soccer Club	1,000
Beverley Redbacks Hockey Club Inc	1,000
Bibra Lake Junior Football Club Inc	1,840
Boddington Golf Club	500
Boddington Junior Football Club	1,000
Boddington Triathlon Club (Inc)	800
Boyanup Hockey Club Inc	1,140
Boyup Brook Cricket Club Incorporated	800

Boyup Brook Golf Club	1,000
Braves Baseball Club of Melville City (Inc)	1,530
Breakers Netball Club	966
Breakers WA Swim Club Inc	1,000
Bridgetown Netball Association Inc	1,860
Brixton Street Tennis Centre Inc	830
Brookton Netball Club	800
Broome Sailing Club Inc	1,000
Broome Softball Club	800
Bruce Rock Netball Club	1,000
Bruce Rock Squash Club	800
Bruce Rock Tennis Club	960
Bunbury Bowling and Social Club Inc	2,850
Bunbury Rowing Club Inc	1,430
Bunbury Rugby Union Football Club	1,410
Bunbury Runners Club	2,640
Bunbury Swimming Club Inc	1,020
Bunbury Triathlon Club	1,350
Burracoppin Hockey Club	800
Busselton Bowling Club (Inc)	2,100
Busselton Surf Life Saving Club Inc	2,100
Busselton Swimming Club Inc	1,100
Byford BMX Club	1,570
Cable Beach Football Club	1,300
Canning City Soccer Club	2,500
Canning Cougars Tee-Ball Club (Inc)	1,870
Canning Softball Association	2,500
Canning Vale Cricket Club Inc	800
Canning Vale Junior Cricket Club	1,070
Capel Hockey Club	1,100
Capel Horse and Pony Club Inc	1,000
Cardinals (B.C.D.) Junior Football Club	1,300
Carine Cats Ball Club	3,000
Carine Masters Swimming Inc	800
Carnamah Netball Club Inc	1,000

## FUNDING TABLE (CONTINUED)

Carnarvon Horse & Pony Club Inc	800
Casuals-Swans Hockey Club Inc	1,050
Central Midlands Riding & Pony Club	800
Chequers Golf Club Inc	1,335
Chittering Junior Football Club	2,500
Chittering Riding Club Inc	800
City Beach Water Polo Club Inc	3,000
City of Perth Amateur Swimming and Lifesaving Club (The)	1,030
City of Perth Surf Life Saving Club Inc	3,000
Claremont Jets Gridiron Club Incorporated	800
Coastal Netball Region Inc	800
Cockburn Basketball Association	2,500
Cockburn BMX Stadium Inc	900
Cockburn Bowling and Recreational Club Inc	1,250
Cockburn City Soccer Club Inc	2,500
Cockburn Dragon Boat Club Inc	840
Cockburn Junior Cricket Club Inc	1,950
Cockburn Masters Swimming Club Inc	800
Cockburn Netball Club Inc	2,500
Collie Endurance and Trail Riders' Club	456
Comet Bay Bowling Club	800
Congolese Soccer Club Association Inc	800
Coogee Basketball Club	2,110
Corrigin Golf Club	800
Curtin Trinity Pirates Hockey Club Inc	2,500
Curtin University Boat Club Inc	1,000
Dale Sports Club Inc	1,410
Dalkeith Nedlands Bowling Club Inc	2,100
Dardanup Horse and Pony Club Inc	800
Darlington Parkerville Warriors Football Club	1,100
Denmark Country Club (Inc.)	1,130
Denmark Dragon Boat Club	800
Denmark Surf Life Saving Club Inc	2,200
Dongara Denison Surf Lifesaving Club	1,140
Doubleview Bowling and Recreation Club Inc	3,000

Dowerin Football Club Inc	1,200
Dowerin Tennis Club Inc	800
Dressage Association of WA Inc	800
Dunsborough & Districts Country Club	1,000
East Fremantle Cricket Club	800
East Fremantle Lacrosse Club Inc	2,180
East Perth District Basketball Association	3,000
Eastern Goldfields Cycle Club	1,100
Eaton Cricket Club Inc	1,360
Eaton Eagles Women's Hockey Club (Inc)	1,000
ECU Chequers Volleyball Club Inc	900
ECU Hockey Club Incorporated	1,000
Ellenbrook Falcons Hockey Club Inc	1,100
Esperance Amateur Swimming Club	800
Esperance Bay Gun Club (The)	800
Esperance Bay Yacht Club	2,970
Esperance Equestrian Club Inc	800
Esperance Hockey Association	2,500
Esperance Netball Association	2,500
Esperance Pony Club	800
Esperance Squash Club	2,500
Esperance Taekwondo Academy Inc	1,180
Esperance Triathlon Club Inc	800
Exceed Triathlon Club	800
Exmouth Bowling Club	950
Exmouth Squash Club Inc	1,360
Floreat Athena Soccer Club	2,000
Floreat Surf Life Saving Club	3,000
Forest Lakes Ball Club Incorporated	2,560
Forrest Park Croquet Club Inc	800
Forrestfield United Soccer Club WA Inc	2,500
Fremantle Bowling Club Inc	800
Fremantle City Dockers Junior Football Club	2,192
Fremantle Hockey Club Inc	2,500
Fremantle Port Swimming Club Inc	1,390

## FUNDING TABLE (CONTINUED)

Fremantle Rowing Club Inc	975
Fremantle Soccer Club Inc	2,500
Fremantle Swan Dragon Boat Club Inc	910
Fremantle Triathlon Club Inc	2,000
Geographe Bay Yacht Club Inc	2,390
Geraldton Clay Target Club Inc	1,370
Geraldton Harriers Club	1,250
Geraldton J.K.A. Karate Club	728
Geraldton Tennis Club	750
Geraldton Triathlon Association Inc	2,130
Gingin Bowling Club	1,040
Glen Forrest Sports Club Inc	800
Gnowangerup Netball Club	1,000
Goldfields Equestrian Centre Management Committee	800
Goldfields Equestrian Centre Management Committee	800
Goomalling Ladies Hockey Club Inc	800
Goomalling Netball Club Inc	920
Gosnells City Football, Sporting and Social Club	2,500
Gosnells Hawks Baseball Club	2,910
Gosnells Junior Football Club Inc	2,500
Hamersley Netball Club Inc	1,400
Hannans Cricket Club	1,000
Hartfield Country Club	2,500
Harvey Brunswick Leschenault Junior Football Club	2,500
Hedland BMX Club	1,000
Hilton Palmyra Cricket Club Inc	1,280
Hopetoun Clay Target Club Inc	800
Jaguars Softball Club	1,350
Jesters Flat Polocrosse Club Inc	800
Jets Basketball Club Inc	2,500
Jetz Netball Club	1,600
Joondalup City Football Club Inc	2,500
Joondalup Districts Cricket Club	1,910
Joondalup Kinross Cricket Club Inc	2,605
Joondalup Netball Association	2,500

Kalamunda Club Inc	1,660
Kalamunda Districts Swimming Club Inc	1,120
Kalamunda Rangers Inc	3,000
Kalgoorlie District Pony Club	800
Kalgoorlie Tri Club Inc (previously Goldfields Triathlon Club)	940
Kardinya Netball Club Inc	1,180
Karratha and King Bay Horse and Pony Club	1,000
Katanning Country Club	1,540
Kazuals Netball Club	900
Kellerberrin & Districts Amateur Aquatic Club	800
Kellerberrin Bowling Club Inc	1,010
Kellerberrin Hockey Club Inc	830
Kelmscott Junior Football Club Inc	2,500
Kelmscott Pony Club Inc	800
Kensington Cricket Club Incorporated	800
Kingsford Lions Football Club	900
Kingsley Woodvale Junior Cricket Club	2,820
Knightz Netball Club	1,010
Kojonup Tennis Club	2,140
Kwinana Amateur Swimming and Life Saving Club Inc	800
Kwinana Cricket Club	1,240
Kwinana Junior Knights Football Club	2,800
Kwinana Rugby Union Club Inc	1,610
Kwinana Tigers Hockey Club	1,564
Lake Grace-Pingrup Football Club	1,250
Lakeside Baptist Church Inc	2,160
Lawley Aquatic Swimming Club Inc	800
Leda Junior Football Club Incorporated	1,100
Leeming Spartan Cricket Club	2,400
Leeming Strikers Soccer Club	1,020
Leisure Park Masters Swimming Inc	800
Lesmurdie Legends Swimming Club Inc.	1,980
Lesmurdie Mazenod Junior Cricket Club	1,450
Lesmurdie Saints Junior Football Club	1,600
Lesmurdie Walliston Cricket Club Inc	800

## FUNDING TABLE (CONTINUED)

Log Fence Pony Club	1,000
Maddington Gosnells Squash Club Inc	800
Maddington Junior Football Club	2,000
Mandurah Cricket Club Inc	1,520
Mandurah Masters Swimming	800
Mandurah Offshore Fishing & Sailing Club	3,000
Manning Memorial Bowling Club Inc	2,360
Margaret River Netball Association	2,500
Margaret River Underwater Hockey Club Inc	1,000
Marist Junior Football Club Inc	1,000
Melville City Football Club Inc	2,500
Melville City Hockey Club	2,500
Melville Lakers Netball Club	1,700
Melville Masters Swimming Club (Inc)	850
Merredin Junior Cricket Council	800
Midcity Hockey Club Inc	800
Midland Cycle Club Inc	950
Midland Guildford Cricket Club	1,800
Midwest Gascoyne Netball Region	800
Midwest Regional Cricket Board	2,550
Mingenew Bowling Club	800
Mingenew Netball Club Inc	1,000
Modernians Hockey Club	2,500
Mods Netball club	800
Moora Amateur Swimming Club Inc	890
Morley Bayswater Junior Cricket Club	1,310
Morley Cricket Club (Inc)	870
Mosman Park Junior Football Club	2,500
Mount Barker Golf Club Inc	550
Mount Lawley Bowling Club Inc	1,140
Mt Barker Amateur Swimming Club	800
Mt Lawley District Cricket Club	1,400
Mt Many Peaks Horse and Pony Club	800
Mukinbudin Pistol Club	800
Murdoch University Rowing Club	800

Narrogin Equestrian Association	800
Narrogin International Rules Basketball Association	3,000
Nedlands Tennis Club	2,830
Newdegate Hockey Club Inc	800
Newman Knights Hockey Club Inc	2,500
Newman Water Polo Players Association	1,130
Newtown Condongup Football Club Inc	2,350
Nga Iwi Katoa Inc	1,050
Nickol Bay Hockey Association Inc	1,773
North Beach & Districts Rugby League Football Club	2,500
North Beach Athletics	800
North Beach Cricket Club Inc	800
North Beach Junior Football Club Inc	2,500
North Coast Ball Club	3,000
North Cottesloe Surf Life Saving Club	3,000
North Perth Tennis Club	650
Northam Country Club	920
Northampton Netball Association	1,050
Northern Cobras Junior Football Club	1,000
Nungarin Bowling Club	800
Old Aquinians Hockey Club Inc	2,500
Old Haleians Hockey Club	2,500
Olympic FC Inc	2,500
Ozind Golf Club Inc	800
Padbury Junior Basketball Club Inc	2,050
Panthers Basketball Club	2,100
Paraburdoo Amateur Swimming Club	800
Parkerville Junior Cricket Club	1,240
Peak Trampoline Inc	1,330
Peel Aquatic Club	800
Peel District Cycling Club Inc	2,080
Peel Districts Mountain Bike Club	1,000
Peel Dynamic Gymsports	800
Peel Junior Soccer Association Inc	2,040
Peppars Softball Club Inc	800



## FUNDING TABLE (CONTINUED)

Perth Baseball Club	1,130
Perth Basketball Association Inc	2,500
Perth Blitz Gridiron Club Inc	800
Perth Broncos American Football Club	800
Perth-Bayswater Rugby Union Football Club Inc	2,500
Phantoms' Waterpolo Club (Inc)	1,070
Phoenix Basketball Club (formerly Sun City Phoenix Basketball Club)	1,380
Pinjarra Basketball Association	1,500
Pinjarra Swimming Club Inc	800
Pink Lake Country Club	1,000
Port Kennedy Junior Football Club	289
Prelates Netball Club Inc	1,190
Quairading Tennis Club (Inc.)	890
Queens Park Junior Football Club	1,700
Quinns Districts Netball Club Inc	1,350
Quinns Mindarie Surf Life Saving Club Inc	3,000
Reabold Tennis Club Inc	3,000
Redcliffe Sporting Club	2,500
Riverton Aquanauts Inc	1,070
Rockingham Coastal Sharks Rugby League and Sporting Club Inc	2,500
Rockingham District Hockey Club	2,500
Roleystone Football Club Inc	2,350
Roleystone Gymnastics Club Inc	860
Rookies Softball Club Inc	800
Rossmoyne Junior Football Club	1,760
Rovers Cardinals Hockey Club Inc	1,068
Safety Bay Football Club	2,500
Safety Bay Yacht Club Inc	800
Saints Netball Club	1,880
Scarborough Junior Football Club	2,500
Scarborough Mercantile Cricket Club	810
Scarborough Netball Club Inc	1,240
Scarborough Sportsmen's Club	3,000
Secret Harbour Dockers Football Club	2,500
Secret Harbour Surf Life Saving Club Inc	3,000

Serpentine/Jarrahdale Netball Association Incorporated	1,900
Settlers Netball Club Inc	1,000
Show Ski WA	800
Somerset Aussi Masters Inc	800
Somerset Water Polo Inc	1,200
Sorrento Bowling Club	3,000
Sorrento Duncraig Junior Cricket Club Inc	1,760
Sorrento Duncraig Junior Football Club Inc	2,500
Sorrento Football Club Inc	2,500
South Coogee Junior Football Club Inc	2,500
South Mandurah Junior Football Club Inc	2,500
South Midlands Pony Club Inc	800
South of Perth Yacht Club Inc	3,000
South Perth Baseball Club	1,290
South Perth Bowling Club	1,590
South Perth Cricket Club	1,875
South Perth Lawn Tennis Club Inc	1,910
South West Orienteering Trekkers	1,000
South West Phoenix Football Club	1,750
Southern Districts Gaelic Football Club	1,000
Southern Districts Junior Football Assoc Inc	2,500
Southern River Hockey Club	2,200
Southern Star Trampoline Academy Inc	930
Southlake Dolphins Swimming Club Inc	1,200
Southside Penrhos Wesley Swimming Club	1,443
Spearwood Dalmatinac Sport and Community Club Inc	1,240
Sports and Cultural Club Serbia of WA Inc	1,700
St Josephs Mackillop Soccer Club Inc	1,200
Sterling Saints Netball Club	750
Stirling Basketball Association Inc	2,500
Stirling City Rangers Hockey Club	2,500
Subiaco City Junior Soccer Club Inc	2,350
Subiaco Marist Cricket Club Inc	3,000
Success Netball Association Inc	2,250
Success Strikers Netball Club Inc	1,400

## FUNDING TABLE (CONTINUED)

Sutherlands Park Soccer Club	2,500
Swan Athletic Sporting Club Inc	1,740
Swan Districts Baseball Club Inc	870
Swan Districts Junior Baseball Club	1,110
Swan Hills Swimming Club Inc	800
Swan River Rowing Club	1,150
Swanbourne Cricket Club	800
The Cruising Yacht Club of WA	2,639
Thornlie Football and Sports Club Inc	2,000
Thornlie Hawks Softball Club Inc	800
Three Springs Netball Club Inc	1,000
Toodyay Cricket Club (Inc)	910
Town of Vincent Cricket Club Inc	800
Towns Cricket Club Inc	950
Tuart Hill Cricket Club	1,700
University of WA Boat Club	800
University of WA Hockey Club	2,500
University of Western Australia Cricket Club	800
University of Western Australia Fencing Club Incorporated	1,000
UWA Baseball and Softball Club Inc	1,000
UWA Uniswim Swimming Club Inc	800
Victoria Park Belmont Baseball Club	1,730
Victoria Park Xavier Hockey Club Inc	2,500
Vietnamese Soccer Club of WA Inc	800
Wagin Amateur Swimming Club	800
Walkaway Polocrosse Club Inc	800
Wandering Cricket Club	800
Wanneroo B.M.X Raceway Club	2,210
Wanneroo Basketball Association (Inc)	3,000
Wanneroo Cricket Club Inc	1,660
Wanneroo Junior Football Club	2,500
Warren Pony Club	800
Warren Womens Hockey Association	1,510
Warwick Greenwood Junior Football Club	2,064
Wembley Athletic Club	2,070

West Coast Gymnasts	2,060
West Coast Junior Football Club Inc	2,500
West Stirling Baseball Club	1,430
Western Shamrocks Gaelic Football Club	800
Western Suburbs Cricket Club	2,500
Westoz Wakeboarding Inc	800
West's Subiaco Rugby Union Club Inc	2,500
Westside BMX Club	1,100
Westside Christ Church Aquatic Inc	800
Westside Wolves Hockey Club Inc	2,500
Willagee Rugby League Football Club Inc	2,050
Willetton Baseball Club	3,000
Willetton District Cricket Club	1,710
Willetton Hockey Club	2,500
Willetton Junior Cricket Club	1,950
Willetton Netball Club	1,558
Winnacott Kats Junior Football Club Inc	2,500
Wongan Hills Squash Club Inc	800
Woorree Park BMX Club Inc	1,750
Yanchep Redhawks Junior Cricket Club Inc	800
Yokine Districts Bowling Club (Inc)	750
York Pony Club Inc	800
Zimbabwe Association of Western Australia	1,000

# NOTES



## HEALTHWAY

24 Outram St  
West Perth  
PO Box 1284  
West Perth 6872